



**Leading Veterinary Imaging
& Equipment Solutions
Provider in Canada**

SINCE 1949

2026 CATALOG



**Leading Veterinary Imaging
& Equipment Solutions
Provider in Canada**



**OPENING A
NEW CLINIC?**
ASK ABOUT OUR
TAILORED PROGRAMS
FOR NEW
PRACTICES

**QUESTION?
WANT A QUOTE?
CONTACT US TODAY!**
1-877-440-4494
info@uxr.ca

FOR ALL YOUR VETERINARY IMAGING AND EQUIPMENT SOLUTIONS

- TRUSTED PARTNER SINCE 1949

UNMATCHED EXPERTISE AND SERVICE YOU CAN TRUST

- DEDICATED TEAMS OF RESPONSIVE, FRIENDLY PROFESSIONALS THAT ARE ATTENTIVE TO YOUR NEEDS

PROUDLY CANADIAN

- COAST-TO-COAST SALES, INSTALLATION, TRAINING, TECHNICAL SUPPORT, SERVICE AND MAINTENANCE DELIVERED BY LOCAL UXR EXPERTS:
 - WESTERN CANADA
 - ONTARIO
 - QUEBEC
 - ATLANTIC CANADA

FOR SERVICE, PREVENTATIVE MAINTENANCE OR TECHNICAL SUPPORT : SERVICE@UXR.CA

2026 CATALOG

UXR X-RAY SYSTEMS.....	3	FLUID PUMPS.....	17
UXR DIGITAL IMAGING SOLUTIONS.....	4	MICROSCOPES.....	17
UXR INTRAORAL SOLUTIONS.....	5	STERILIZERS & AUTOCLAVES.....	17
X-RAY SYSTEMS.....	6	CENTRIFUGES.....	17
PORTABLE GENERATORS / MOBILE DR.....	7	PATIENT WARMING.....	18
DENTAL X-RAY.....	8	ELECTRO/CRYO SURGERY.....	19
DENTISTRY.....	9	X-RAY PROTECTION & ACCESSORIES.....	19
ULTRASOUND.....	10	REHABILITATION.....	20
LASERS.....	12	BRACES.....	21
ENDOSCOPY.....	12	TUBS, TABLES & SCALES.....	22
LIGHTING.....	13	CAGES & CONTAINMENT.....	23
ANESTHESIA.....	14	PARTNERS.....	24
PATIENT MONITORING.....	15		

UXR X-RAY SYSTEMS

BY THE
VETERINARY
IMAGING
EXPERTS IN
CANADA

FLEXIBLE
PURCHASING
PROGRAMS
NO UPFRONT COSTS
OWNERSHIP PROGRAMS
AVAILABLE

FULLY INTEGRATED WITH UXR DR SOLUTIONS

- ✓ PARAMETERS CONFIGURED AUTOMATICALLY
- ✓ ENHANCED WORKFLOW
- ✓ ALWAYS OPTIMAL EXPOSURE - ELIMINATES DOSAGE ERRORS



X-RAY SYSTEMS

UXR X-ray systems deliver **best-in-class technical features for veterinary applications** at a **highly competitive cost of ownership**.

Compatible With Any DR Solution : Manual dose entry or full integration with UXR DR solutions.

Small Footprint : Compact design ideal for smaller X-ray rooms and space-constrained clinics.

Easy Foot Controls : Helps you stay focused on patient handling and positioning.

Powerful, Efficient Generator : Compact high-frequency generator 32 kW / 400 mA.

Floating Table : 1.68m (5.5 ft) table with smooth 4-way movement for precise patient alignment.

Sharp Imaging : 1.0 / 2.0 focal spots; or optional 0.6 / 1.3 for exotics and specialty practices.

Compatible With Any Detector : Adjustable 43 cm × 43 cm (17" × 17") detector tray.

Built For Daily Clinical Use : Heavy-duty table with weight capacity exceeding 150 kg.

Warranty Options : Standard 2-year warranty, with an optional 5-year limited warranty available.

UXR DIGITAL IMAGING SOLUTIONS



COAST TO COAST
PREMIUM
INSTALLATION
AND SERVICE

- ✓ Training
- ✓ Remote Support
- ✓ Software Updates

2-YEAR
STANDARD OR
5-YEAR
EXTENDED WARRANTY
&
REMOTE SUPPORT

BY THE
VETERINARY
IMAGING
EXPERTS IN
CANADA

UXR DIGITAL IMAGING SOLUTIONS

UXR's turnkey Direct Radiography Solutions seamlessly combine advanced image acquisition software, cutting-edge computer hardware, and high-resolution Cesium detectors to deliver unmatched performance.

Superior Image Quality : Industry-leading image clarity with lowest dose of radiation.

Flexible Configurations : Choose between HD/wired or high-performance SHD/wireless.

Streamlined Workflow : Optimized for efficient veterinary X-ray imaging processes.

Versatile Solutions : Ideal for retrofits or seamless integration with UXR X-ray systems.

Seamless Integration : Supports integration with compatible Practice Management Software.

Multilingual : UXR View Software available in English and French.

Reliable Support : Comprehensive training and remote assistance.



UXR INTRAORAL SOLUTIONS



UXR INTRAORAL IMAGING SOLUTIONS

BY THE VETERINARY IMAGING EXPERTS IN CANADA  SINCE 1949

UXR's Intraoral Imaging Solutions combine **ultra-low dose/high resolution, intraoral DR sensors and computer hardware** with **advanced veterinary acquisition software**.

Choice of Sizes : Available in sensor size 2 (regular) and size 1 (small).

Flexible Reporting : Easily generate examination reports.

Multilingual : UXR View Software available in English and French.

Streamlined Workflow : Optimized for efficient veterinary X-ray imaging processes.

Seamless Integration : Supports integration with compatible Practice Management Software.

Ergonomic Design : Ultra-thin kevlar housing, smooth edges, rounded corners, and reinforced flexible cable.

Reliable Support : Includes a 2-year limited warranty with comprehensive training and remote assistance.

X-RAY SYSTEMS



**OVER 20
VETERINARY
X-RAY
SOLUTIONS**



**VET-RAY
DIGITAL DX-V**
FULLY INTEGRATED DR SOLUTION



**VET-RAY
STANDARD VET**
STANDARD X-RAY SYSTEM



**VET-RAY
AGILITY SURGICAL ARM**
FLUOROSCOPY



**VET-RAY
COMPACT VET**
SMALLER FOOTPRINT



**VET-RAY
ELITE VET**
VARIABLE TABLE HEIGHT
AND SUPER HD



**VET-RAY
MULTI VET**
CT, DR AND FLUOROSCOPY



**VET-RAY
PREMIUM VET**
HORIZONTAL BEAM
APPLICATIONS

PORTABLE GENERATORS



MINXRAY
TR90B
BATTERY-POWERED
QUICKLY PROGRAMMABLE



UXR
PORTABLE X
SMALL, LIGHT,
LARGE CAPACITY LITHIUM BATTERY



POSKOM
VET-20BT
BATTERY OPERATED
LIGHT AND COMPACT

MOBILE DR SOLUTIONS



THE VETERINARY IMAGING EXPERTS IN CANADA



UXR
DR EQUINE SOLUTIONS
THE WORLD'S FIRST FLEXIBLE
TFT CSI X-RAY DETECTOR
DESIGNED FOR EQUINE IMAGING
10" X 13" DR



UXR
DR MOBILE SOLUTIONS
THE MOST ADVANCED AND
FLEXIBLE PORTABLE
DR SOLUTION
14" X 17" OR 17" X 17" DR



VET-RAY
WEPX 2.0
BUILT FOR EXTREME PORTABLE USE
ALL DAY IMAGING, NO MATTER
HOW LONG YOUR DAY IS
10" X 12" DR

DENTAL X-RAY

DIGIRAY

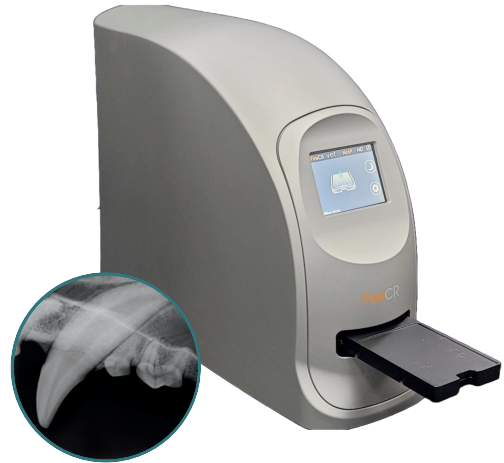
DIGIRAY DENTAL SOLUTIONS

**PUSH & GO
FEEDING TRAY
IS SIMPLE AND
QUICK TO
OPERATE**

FULL SIZE 4 IMAGING PLATE
FULL RANGE OF IMAGING PLATE SIZES 0, 1, 2, 3, 4C AND A FULL SIZE 4 ARE AVAILABLE.

EASY-TO-USE IMAGING SOFTWARE
EASY IMAGE ACQUISITION, PROCESSING AND MANAGEMENT

COMPACT AND LIGHT DESIGN
ONLY 13 CM WIDE AND WEIGHS 5.5 KG.



IM3[®] THE GLOBAL NAME IN VETERINARY DENTISTRY

IM3 DENTAL SOLUTIONS



**OTHER
SENSOR SIZES
AVAILABLE**
Contact us
for details

DR X SENSOR



CR 7 2.0 VET

**CR
or
HYBRID
CR/DR**



CR 8 VET

VET-RAY[®] technology by SEDECAL

VET-RAY DENTAL SOLUTIONS

**VET-RAY
DIGITAL DENTAL SENSOR
EXCLUSIVE POSITIONER**



**VET-RAY
WALL
MOUNT
SELECTABLE
ARM LENGTH**



**VET-RAY
HANDHELD
CAPACITOR GENERATOR**

midmark[®]

MIDMARK DENTAL SOLUTIONS

**PROGENY
IMAGING
SOFTWARE**



**5-YEAR
STANDARD
MANUFACTURER'S
WARRANTY**



GENERATOR

**BITE-RESISTANT
DR SENSOR**
ONE REPLACEMENT SENSOR AT NO
CHARGE SHOULD DAMAGE OCCUR

DENTISTRY

IM3® | THE GLOBAL NAME IN VETERINARY DENTISTRY

IM3 EVOLUTION RANGE VETERINARY DENTAL UNITS

- Mounting Options
- Handpiece And Line Options
- High Quality Materials

**BUILD
YOUR UNIT
NOW!**

IM3 EVOLVE

The perfect entry level for veterinary dentistry

IM3 ADVANCED

Geared toward the more experienced practitioner

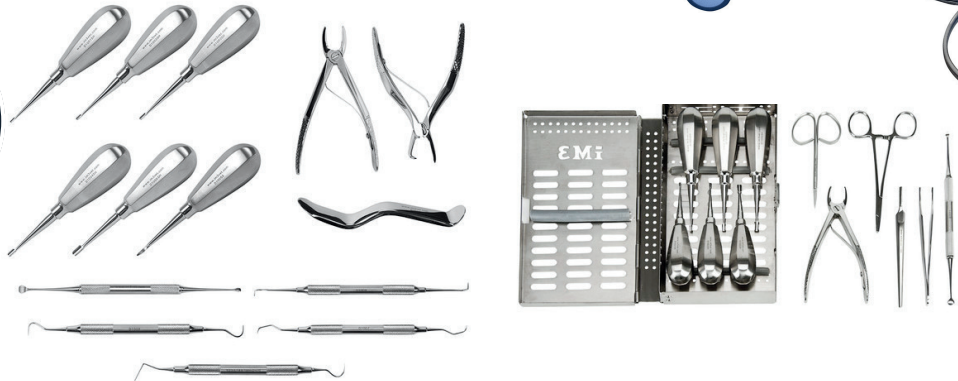
IM3 PROFESSIONAL

Sets the standard for true veterinary dental equipment



IM3 HAND INSTRUMENTS

**A WIDE
VARIETY OF
HIGH-QUALITY
INSTRUMENTS**




midmark®

**MIDMARK
MOBILE DENTAL
DELIVERY SYSTEM**

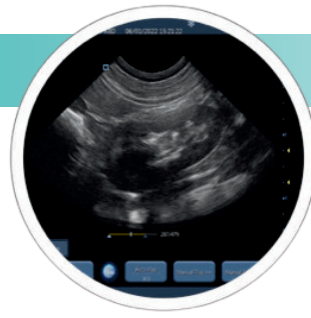
**COMPACT
DESIGN**



- All-In-One System
- Quieter Operation
- LED Water-Level Indicator
- LED High-Speed Handpieces and Scaler
- Industry Leading 5-Year Warranty
- Increased Storage And Integrated Handles

**MIDMARK'S
TOP CLASS
DURABILITY**

ULTRASOUND



CORE IMAGING INTEGRA WIRELESS

THE GOLD STANDARD IN HANDHELD ULTRASOUND

LIGHTWEIGHT AND EASY TO HANDLE

Less than 1/4 pound transducer weight

COMPREHENSIVE FEATURE SET

- High-resolution multi-frequency construction
- Wireless connection to Android or iOS
- Veterinary-specific exam mode and calculations
- Waterproof

COMPETITIVE PRICING

- No monthly or annual fee
- Advanced software features included at no additional cost



**3-YEAR
WARRANTY**

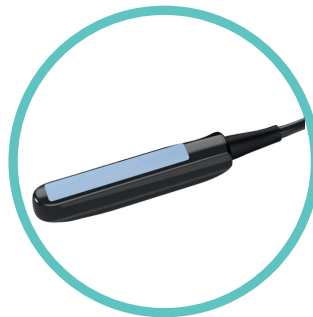
INCLUDING DROPS
AND DEFECTS

**INDUSTRY-
LEADING
WARRANTY**

*MORE THAN JUST AN ULTRASOUND
WE HELP VETS SEE CLEARLY*



**CORE IMAGING
INTEGRA WIRED**
THE LOWEST COST
INTEGRA



**CORE IMAGING
INTEGRA I WIRELESS**
LR PROBE



**CORE IMAGING
INTEGRA II**
MOST VERSATILE
WIRELESS HANDHELD ULTRASOUND

ULTRASOUND



HAVE YOU EVER STRUGGLED TO CAPTURE THE BEST IMAGES OF YOUR PATIENTS TO MAKE A CONFIDENT DIAGNOSIS?

CoreVu Scan Assist

5 Amazing benefits of CoreVu

- Real-time assistance, with video and audio streaming
- Sonographers dedicated to assisting you when you need it
- No additional hardware or software purchase necessary
- Allows for perfect image capture for telemedicine review
- Increases your scanning knowledge wherever you are



**ONE ON ONE
TRAINING
LEARN FROM
ANYWHERE**



**CORE IMAGING
NAVI**
PRECISE IMAGING
ANYWHERE



**CORE IMAGING
PILOTER**
SMART TABLET
ULTRASOUND



**CORE IMAGING
CLOVER**
AFFORDABLE
EXCELLENCE FOR ALL



**CORE IMAGING
CLIVIA**
THE ULTIMATE IN
HIGH-RESOLUTION SCANNING



**CORE IMAGING
CARNATION**
LARGEST TOUCHSCREEN
AVAILABLE

LASERS



THE MOST ADVANCED LASER TECHNOLOGIES AVAILABLE TO VETERINARY PROFESSIONALS



CUTTING EDGE
40W CO2
SURGICAL LASER
THE GOLD STANDARD
IN LASER SURGERY



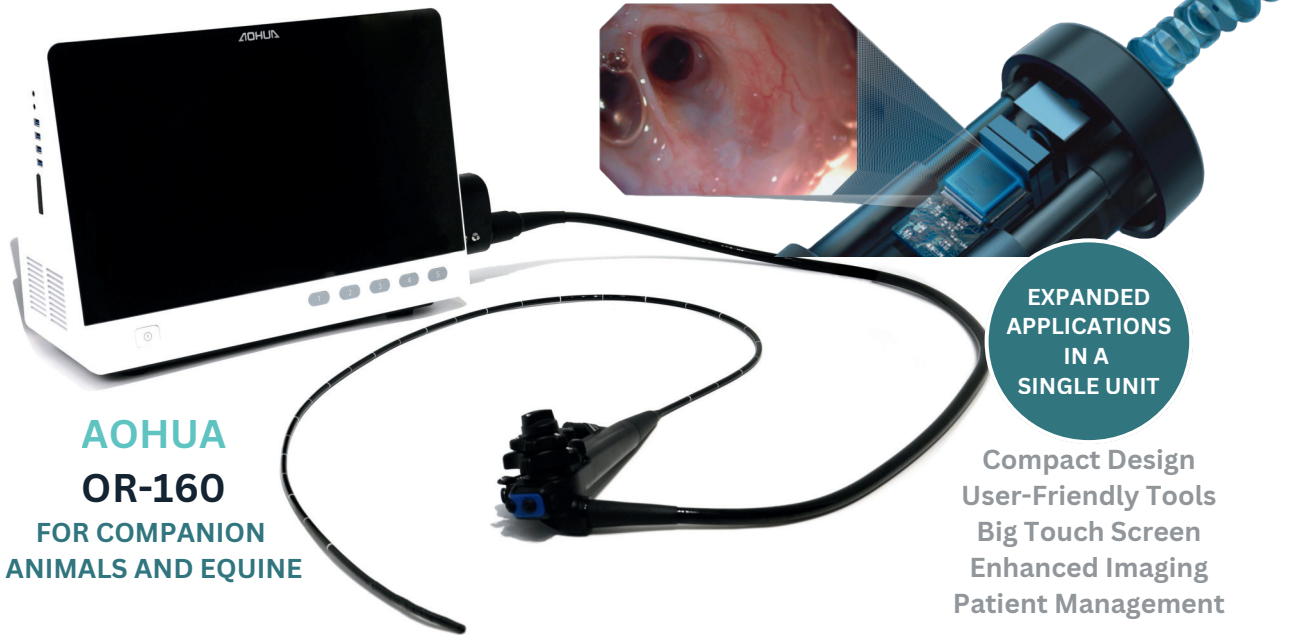
CUTTING EDGE
EVO
THERAPY LASER
THE ONLY COLD CLASS IV
VETERINARY LASER



MANY OTHER
THERAPY AND
SURGICAL LASERS
AVAILABLE
Contact us
for details

ENDOSCOPY

AOHUA ALL-IN-ONE VET ENDOSCOPY SOLUTIONS



AOHUA
OR-160
FOR COMPANION
ANIMALS AND EQUINE

EXPANDED
APPLICATIONS
IN A
SINGLE UNIT

Compact Design
User-Friendly Tools
Big Touch Screen
Enhanced Imaging
Patient Management

LIGHTING



DUAL, STAND, CEILING, WALL-MOUNT AND MANY OTHER MODELS AVAILABLE
Contact us for details



MEDICAL ILLUMINATION
MI-550
COMPACT BUT POWERFUL
EXAM LIGHT
55 000 LUX



MEDICAL ILLUMINATION
MI-750
LIGHT SURGERY AND
PROCEDURES
75 000 LUX



MEDICAL ILLUMINATION
MI-1000 LED
IDEAL
SURGERY LIGHT
100 000 LUX



BURTON
AIM HI LED
SURGERY AND PROCEDURE LIGHT
100 000 OR 70 000 LUX



BURTON
OUTPATIENT LED
EXAM AND MINOR
PROCEDURE LIGHT
90 000 LUX



BURTON
SUPER EXAM LED
SUPERIOR ILLUMINATION
TO A FOCUSED AREA



MIDMARK
120 LED
EXAM LIGHT
LONG LIFE AND
AFFORDABILITY
35 000 LUX



MIDMARK
130 LED
TREATMENT LIGHT
EFFORTLESS,
FLEXIBLE LIGHT
60 000 LUX

ANESTHESIA



HIGH-END ANESTHESIA MACHINES



UXR

VA-1

VARIETY OF CONFIGURATIONS
AND APPLICATIONS

WALL MOUNTED - TABLETOP - STAND

UXR
BB-1
BAIN BLOCK
HIGH QUALITY AIRWAY
PRESSURE GAUGE.



UXR
ANESTHESIA
ACCESSORIES
SD30 TROLLEY
BREATHING BAGS
OXYGEN HOSE
WASTE GAS HOSE


midmark[®]

MANY MODELS TO CHOOSE FROM



MIDMARK
VME2
TABLETOP/WALL MOUNT



MIDMARK
VME2
COMPACT DESIGN



MIDMARK
VMS
SMALL ANIMAL
ANESTHESIA



MIDMARK
VMS PLUS
FUNCTIONAL AND
CONVENIENT

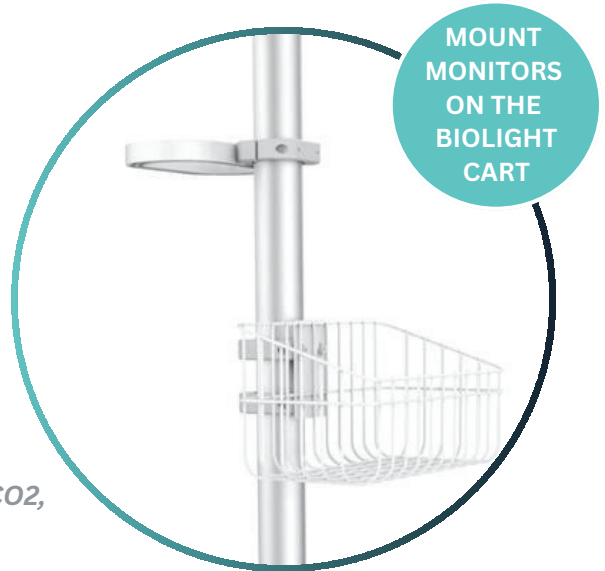
PATIENT MONITORING



REAL-TIME VITAL SIGNS TRACKING
WITH ACCURATE, RESPONSIVE
CLINICAL AND DIAGNOSTIC DATA

Semi Modular Premium Patient Monitors

- Up to 3 module slots providing flexible configuration
- Standard with Masimo SpO2, Masimo mainstream EtCO2, as well as Suntech NIBP
- Built-in anesthesia report functions



BIOLIGHT

G10

3.9 KG

10.1" TFT LCD



BIOLIGHT

G15

5.5 KG

15.6" TFT LCD



BIOLIGHT

G12

4.6 KG

12.1" TFT LCD



BIOLIGHT M850 VET

- 3 LEAD ECG + SPO2
- SPO2 & PULSE RATE
- PLETH WAVEFORM & PERFUSION INDEX
- HEART RATE & ECG WAVEFORM
- RESPIRATION RATE
- RESPIRATION WAVEFORM

PATIENT MONITORING

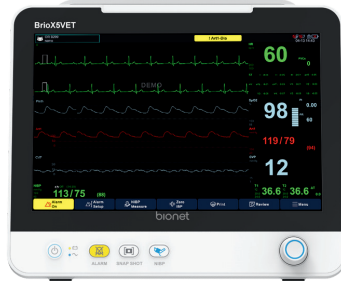
bionet

INDUSTRY'S
LONGEST
WARRANTY
4 YEARS
ON BRIO

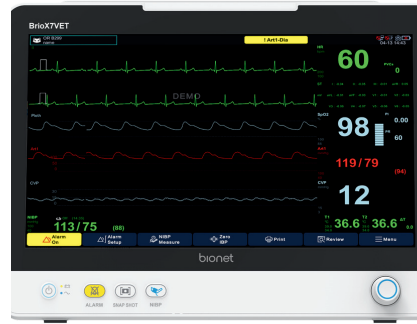
ALL
PROBES AND
ACCESSORIES
AVAILABLE



**BIONET
BRIO X3VET**
UNCOMPROMISING
PERFORMANCE



**BIONET
BRIO X5VET**
MAXIMUM
VERSATILITY



**BIONET
BRIO X7VET**
ULTIMATE
PERFORMANCE



**BIONET
EtCO2 SENSOR**
MAINSTREAM



**BIONET
EtCO2 SENSOR**
SIDESTREAM



**BIONET
OXY9WAVE**
VET PULSE MONITOR



**BIONET
O'PET CURV**
WIRELESS MONITORING

midmark®



**MIDMARK
MULTIPARAMETER
MONITORS**
SAFER, MORE EFFICIENT
ANESTHETIC PROCEDURES

ZOMEDICA®



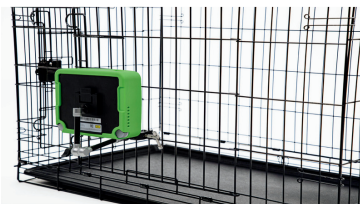
THE ONLY
ZERO-TOUCH
VITAL SIGNS
REMOTE
MONITOR

**ZOMEDICA
VETGUARDIAN PLUS**

PARKS Medical Electronics, Inc.



**PARKS
811-B**
ULTRASONIC DOPPLER
FLOW DETECTOR



MOUNT THE DEVICE
ATTACH TO A KENNEL
OR IV POLE



**ACCESS VITALS
MONITORING**
CONTINUOUSLY MONITORS
TEMPERATURE, PULSE, AND
RESPIRATION **WITH LIVE VIDEO**

FLUID PUMPS



**UXR
VSP-1**
VET SYRINGE PUMP



**UXR
VIP-1**
VET INFUSION PUMP

WITH
INTEGRATED
FLUID
WARMER



**MIDMARK
IV FLUID WARMER**
DESIGNED TO HELP
REDUCE THE RISK OF
HYPOTHERMIA



MICROSCOPES



**LW SCIENTIFIC
I4 INFINITY
4 OBJECTIVE
MICROSCOPE**



**LW SCIENTIFIC
REVELATION III DIN
SUPERIOR PERFORMANCE
AT A GREAT VALUE**

CAMERA
OPTIONS
AVAILABLE

STERILIZERS & AUTOCLAVES



**MIDMARK
NEXT GENERATION**
M9 - 9" STEAM STERILIZER
M11 - 11" STEAM STERILIZER



**TUTTNAUER
T-TOP 10 & 11**
10" AUTOMATIC AUTOCLAVE
11" AUTOMATIC AUTOCLAVE



**TUTTNAUER
TVET 9M & 11M**
9" MANUAL STERILIZER
11" MANUAL STERILIZER



**TUTTNAUER
ULTRASONIC CLEANER**
1 GALLON, 3 GALLONS &
6.5 GALLONS OPTIONS

CENTRIFUGES



**LW SCIENTIFIC
E8**
VARIABLE-SPEED CENTRIFUGE



**LW SCIENTIFIC
ZipCOMBO**
CENTRIFUGE



**LW SCIENTIFIC
COMBO V24T**
CENTRIFUGE



**STATSPIN
VT**
CENTRIFUGE

PATIENT WARMING



HOT DOG

THE MOST ADVANCED PATIENT WARMING SYSTEM

- Reusable, Heavy-Weight, Flexible, Easy To Clean Mattresses
- Touchscreen Temperature Management Controller
- Warms Up In Just A Few Minutes!



HOT DOG

U501V DISPERSIVE ELECTRODE MATTRESS
KEEP YOUR PATIENT WARM
DURING ELECTROSURGERY
NO GROUNDING PLATE REQUIRED



HOT DOG

VETERINARY PATIENT WARMING
CONVERT LOW-VOLTAGE ELECTRICITY
INTO SAFE, PRECISE, CONSISTENT HEAT

**NO WATER,
NO AIR
JUST SAFE
EVEN HEAT!**



BLANKETS
available
IN 3 SIZES

**ADROIT
VETPRO**
FORCED AIR
PATIENT
WARMING



The only
heat therapy
pump that
uses tap
water

**ADROIT
HTP-1500**
HYPO-HYPERThERMIA
WATER THERAPY



**ADROIT
SOFT TEMP**
REUSABLE PADS
AVAILABLE IN 4
SIZES

ELECTRO/CRYO SURGERY

Bovie

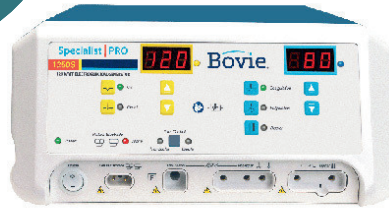


BOVIE
ELECTRO SURGERY
SYSTEM
WITH SMOKE EVACUATION

REPLACE
RETURN ELECTRODE
WITH A
HOT DOG
COMPATIBLE
WARMING
MATTRESS!



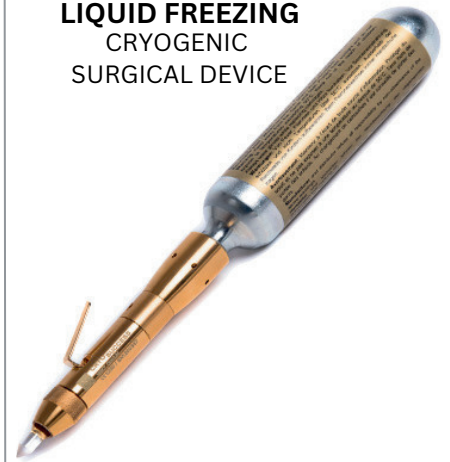
BOVIE
SMOKE SHARK II
SMOKE AND PARTICLE
REMOVAL



BOVIE
1250S SPECIALIST PRO
HIGH FREQUENCY
ELECTRO SURGICAL GENERATOR

CRYOSUCCESS SWISS MADE
LIQUIDFREEZING

CRYOSUCCESS
LIQUID FREEZING
CRYOGENIC
SURGICAL DEVICE



X-RAY PROTECTION & ACCESSORIES



UXR
THYROID SHIELD



UXR
OPEN PALM MITTS



UXR
ADJUSTABLE APRON



UXR
ADJUSTABLE APRON WITH
INTEGRATED THYROID SHIELD
(SEWN-ON)



UXR
FOAM V-TROUGH
POSITIONING SET

REHABILITATION



LOOP ASSISI

At Home Or In-Clinic Use

- Accelerate healing
- Decrease pain and inflammation
- Decrease or eliminate the need for pharmaceuticals and opioids



DENTALOOP ASSISI

Smile! DentalOOP Is Here!

- Helps reduce oral and dental pain and inflammation



PULSEVET ZOMEDICA

Shock Wave Therapy System

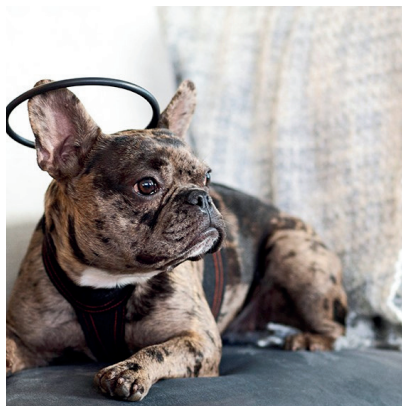
- Small, fast, powerful, and clinically proven
- The #1 shock wave therapy in regenerative veterinary medicine



LOOP LOUNGE ASSISI

Total Body Treatment For Dogs And Cats

- Three pad sizes
- Removable waterproof washable liner
- Rechargeable system designed to deliver 6,000 nose to tail tPEMF treatments



CALMER CANINE ASSISI

A Drug-Free Solution To Canine Separation Anxiety

- Significantly reduces the signs of CSA
- Improves the quality of life
- Long-lasting results
- May also help with other anxieties



UNDERWATER TREADMILL HYDRO PHYSIO

Physiotherapy For Dogs

- Exceptional build quality
- Practitioner-friendly features
- Excellent safety and accessibility



BRACES



**YOUR PET'S
PATH TO RECOVERY
STARTS HERE**



BALTO JUMP
KNEE
BRACE



BALTO LIGATEK
ADJUSTABLE HINGED
KNEE BRACE



BALTO HOCK
HOCK
BRACE



BALTO FLEXOR
ADJUSTABLE HOCK
BRACE



BALTO SPLINT
CARPAL/TARSAL
LAXITY SPLINT



BALTO BONE
FRACTURE
BRACE



BALTO PULL
BRACE FOR HYPERFLEXION
PHALANGES



BALTO SOFT
ELBOW
BRACE



BALTO SOFT PLUS
DOUBLE ELBOW
BRACE



BALTO LUX
SHOULDER
BRACE



BALTO JOINT
CARPAL
COMPRESSION BAND



BALTO NECK
RIGID
NECK BRACE



BALTO NECK ECO
E-COLLAR
ALTERNATIVE



BALTO LIFE
HIP DYSPLASIA
BRACE



BALTO BODY LIFT
BODY HARNESS
WITH HANDLES



BALTO UP
REAR HARNESS
SUPPORT



BALTO LINK
REAR LEGS
CONTROL



BALTO HOCK CAT
HOCK BRACE FOR
FELINES



BALTO SPLINT CAT
CARPAL/METATARSAL
LAXITY SPLINT FOR FELINES



BALTO NECK ECO CAT
E-COLLAR ALTERNATIVE
FOR FELINES



BALTO NECK CAT
RIGID NECK BRACE
FOR FELINES



BALTO BONE CAT
FRACTURE BRACE
FOR FELINES



BALTO PULL CAT
CARPAL HYPERFLEXION
BRACE FOR FELINES

TUBS, TABLES & SCALES



FULL
MIDMARK
PRODUCT
PORTFOLIO
AVAILABLE

PLEASE CONTACT UXR
FOR MORE INFORMATION



**MIDMARK
FOLD-DOWN
WALL MOUNT
COMPACT EXAM TABLE**

**MIDMARK
FOLD-UP
WALL MOUNT
EXAM TABLE**



**MIDMARK
DRY TREATMENT
TABLE
FIXED HEIGHT DRY
PREP TABLE**



**MIDMARK
WET TREATMENT
TABLE
CUSTOMIZABLE
CONFIGURATIONS**



**MIDMARK
FLAT-TOP
DENTAL/SURGERY TABLE
ADJUSTABLE HYDRAULIC**



**MIDMARK
V-TOP
SURGERY TABLE
ADJUSTABLE HYDRAULIC**



**MIDMARK
MOBILE ELECTRIC LIFT TABLE
MULTI-PURPOSE
TABLE**



**BRECKNELL
PS500
SCALE**



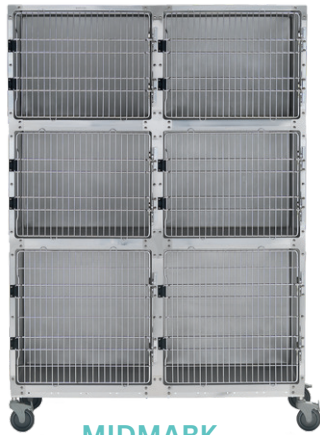
**BRECKNELL
MS-15
SCALE**

CAGES & CONTAINMENT

Custom solutions configured to your exact needs!



MIDMARK
STAINLESS STEEL
CAGES



MIDMARK
STAINLESS STEEL
CAGE ASSEMBLIES



MIDMARK
GLASS BACK
CAGES



MIDMARK
STAINLESS STEEL
SINGLE KENNELS

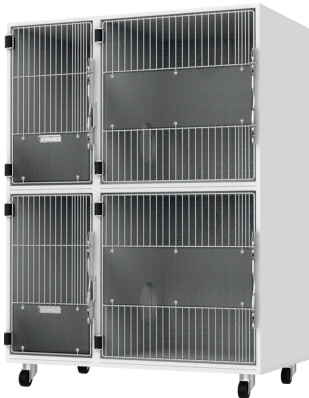


MIDMARK
FRONT-TO-BACK
KENNEL



Minimize fear, anxiety and stress for your furry guests

MIDMARK
CANINE QUIET
COTTAGES



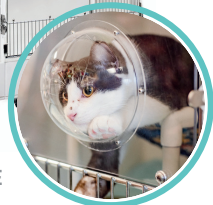
MIDMARK
STAINLESS STEEL
CAT SUITES



MIDMARK
FELINE COMFORT
SUITES



UNIQUE
VIEWING DOME



MIDMARK
CAT PLAY
AND SLEEP



Leading Veterinary Imaging
& Equipment Solutions
Provider in Canada
SINCE 1949

514-695-4114
1-877-440-4494
info@uxr.ca
UXR.ca