



**Leading Veterinary Imaging  
& Equipment Solutions  
Provider in Canada**

SINCE 1949

## 2026 CATALOG

---



**Leading Veterinary Imaging & Equipment Solutions Provider in Canada**



**OPENING A NEW CLINIC?**  
ASK ABOUT OUR TAILORED PROGRAMS FOR NEW PRACTICES

**QUESTION? WANT A QUOTE? CONTACT US TODAY!**  
1-877-440-4494  
info@uxr.ca

## FOR ALL YOUR VETERINARY IMAGING AND EQUIPMENT SOLUTIONS

- TRUSTED PARTNER SINCE 1949

## UNMATCHED EXPERTISE AND SERVICE YOU CAN TRUST

- DEDICATED TEAMS OF RESPONSIVE, FRIENDLY PROFESSIONALS THAT ARE ATTENTIVE TO YOUR NEEDS

## PROUDLY CANADIAN

- COAST-TO-COAST SALES, INSTALLATION, TRAINING, TECHNICAL SUPPORT, SERVICE AND MAINTENANCE DELIVERED BY LOCAL UXR EXPERTS:
  - WESTERN CANADA
  - ONTARIO
  - QUEBEC
  - ATLANTIC CANADA

FOR SERVICE, PREVENTATIVE MAINTENANCE OR TECHNICAL SUPPORT : SERVICE@UXR.CA

## 2026 CATALOG

UXR X-RAY SYSTEMS.....	3	FLUID PUMPS.....	17
UXR DIGITAL IMAGING SOLUTIONS.....	4	MICROSCOPES.....	17
UXR INTRAORAL SOLUTIONS.....	5	STERILIZERS & AUTOCLAVES.....	17
X-RAY SYSTEMS.....	6	CENTRIFUGES.....	17
PORTABLE GENERATORS / MOBILE DR.....	7	PATIENT WARMING.....	18
DENTAL X-RAY.....	8	ELECTRO/CRYO SURGERY.....	19
DENTISTRY.....	9	X-RAY PROTECTION & ACCESSORIES.....	19
ULTRASOUND.....	10	REHABILITATION.....	20
LASERS.....	12	BRACES.....	21
ENDOSCOPY.....	12	TUBS, TABLES & SCALES.....	22
LIGHTING.....	13	CAGES & CONTAINMENT.....	23
ANESTHESIA.....	14	PARTNERS.....	24
PATIENT MONITORING.....	15		

# UXR X-RAY SYSTEMS

BY THE  
VETERINARY  
IMAGING  
EXPERTS IN  
CANADA

FLEXIBLE  
PURCHASING  
PROGRAMS  
NO UPFRONT COSTS  
OWNERSHIP PROGRAMS  
AVAILABLE

## FULLY INTEGRATED WITH UXR DR SOLUTIONS

- ✓ PARAMETERS CONFIGURED AUTOMATICALLY
- ✓ ENHANCED WORKFLOW
- ✓ ALWAYS OPTIMAL EXPOSURE - ELIMINATES DOSAGE ERRORS



## X-RAY SYSTEMS

UXR X-ray systems deliver **best-in-class technical features for veterinary applications** at a **highly competitive cost of ownership**.

**Compatible With Any DR Solution** : Manual dose entry or full integration with UXR DR solutions.

**Small Footprint** : Compact design ideal for smaller X-ray rooms and space-constrained clinics.

**Easy Foot Controls** : Helps you stay focused on patient handling and positioning.

**Powerful, Efficient Generator** : Compact high-frequency generator 32 kW / 400 mA.

**Floating Table** : 1.68m (5.5 ft) table with smooth 4-way movement for precise patient alignment.

**Sharp Imaging** : 1.0 / 2.0 focal spots; or optional 0.6 / 1.3 for exotics and specialty practices.

**Compatible With Any Detector** : Adjustable 43 cm × 43 cm (17" × 17") detector tray.

**Built For Daily Clinical Use** : Heavy-duty table with weight capacity exceeding 150 kg.

**Warranty Options** : Standard 2-year warranty, with an optional 5-year limited warranty available.

# UXR DIGITAL IMAGING SOLUTIONS



COAST TO COAST  
PREMIUM  
INSTALLATION  
AND SERVICE

- ✓ Training
- ✓ Remote Support
- ✓ Software Updates

2-YEAR  
STANDARD OR  
**5-YEAR**  
EXTENDED WARRANTY  
&  
REMOTE SUPPORT

BY THE  
VETERINARY  
IMAGING  
EXPERTS IN  
CANADA

## UXR DIGITAL IMAGING SOLUTIONS

UXR's turnkey Direct Radiography Solutions seamlessly combine advanced image acquisition software, cutting-edge computer hardware, and high-resolution Cesium detectors to deliver unmatched performance.

**Superior Image Quality** : Industry-leading image clarity with lowest dose of radiation.

**Flexible Configurations** : Choose between HD/wired or high-performance SHD/wireless.

**Streamlined Workflow** : Optimized for efficient veterinary X-ray imaging processes.

**Versatile Solutions** : Ideal for retrofits or seamless integration with UXR X-ray systems.

**Seamless Integration** : Supports integration with compatible Practice Management Software.

**Multilingual** : UXR View Software available in English and French.

**Reliable Support** : Comprehensive training and remote assistance.



# UXR INTRAORAL SOLUTIONS



2-YEAR  
STANDARD OR  
**5-YEAR**  
EXTENDED WARRANTY  
&  
REMOTE SUPPORT  
INCLUDING FIRST  
ACCIDENTAL  
DAMAGE



## UXR INTRAORAL IMAGING SOLUTIONS

BY THE VETERINARY IMAGING EXPERTS IN CANADA  SINCE 1949

UXR's Intraoral Imaging Solutions combine **ultra-low dose/high resolution, intraoral DR sensors and computer hardware** with **advanced veterinary acquisition software**.

**Choice of Sizes** : Available in sensor size 2 (regular) and size 1 (small).

**Flexible Reporting** : Easily generate examination reports.

**Multilingual** : UXR View Software available in English and French.

**Streamlined Workflow** : Optimized for efficient veterinary X-ray imaging processes.

**Seamless Integration** : Supports integration with compatible Practice Management Software.

**Ergonomic Design** : Ultra-thin kevlar housing, smooth edges, rounded corners, and reinforced flexible cable.

**Reliable Support** : Includes a 2-year limited warranty with comprehensive training and remote assistance.

# X-RAY SYSTEMS



**OVER 20  
VETERINARY  
X-RAY  
SOLUTIONS**



**VET-RAY  
DIGITAL DX-V**  
FULLY INTEGRATED DR SOLUTION



**VET-RAY  
STANDARD VET**  
STANDARD X-RAY SYSTEM



**VET-RAY  
AGILITY SURGICAL ARM**  
FLUOROSCOPY



**VET-RAY  
COMPACT VET**  
SMALLER FOOTPRINT



**VET-RAY  
ELITE VET**  
VARIABLE TABLE HEIGHT  
AND SUPER HD



**VET-RAY  
MULTI VET**  
CT, DR AND FLUOROSCOPY



**VET-RAY  
PREMIUM VET**  
HORIZONTAL BEAM  
APPLICATIONS

# PORTABLE GENERATORS



**MINXRAY**  
**TR90B**  
BATTERY-POWERED  
QUICKLY PROGRAMMABLE



**UXR**  
**PORTABLE X**  
SMALL, LIGHT,  
LARGE CAPACITY LITHIUM BATTERY



**POSKOM**  
**VET-20BT**  
BATTERY OPERATED  
LIGHT AND COMPACT

# MOBILE DR SOLUTIONS



THE VETERINARY IMAGING EXPERTS IN CANADA



**UXR**  
**DR EQUINE SOLUTIONS**  
THE WORLD'S FIRST FLEXIBLE  
TFT CSI X-RAY DETECTOR  
DESIGNED FOR EQUINE IMAGING  
10" X 13" DR



**UXR**  
**DR MOBILE SOLUTIONS**  
THE MOST ADVANCED AND  
FLEXIBLE PORTABLE  
DR SOLUTION  
14" X 17" OR 17" X 17" DR



**VET-RAY**  
**WEPX 2.0**  
BUILT FOR EXTREME PORTABLE USE  
ALL DAY IMAGING, NO MATTER  
HOW LONG YOUR DAY IS  
10" X 12" DR

# DENTAL X-RAY

## DIGIRAY

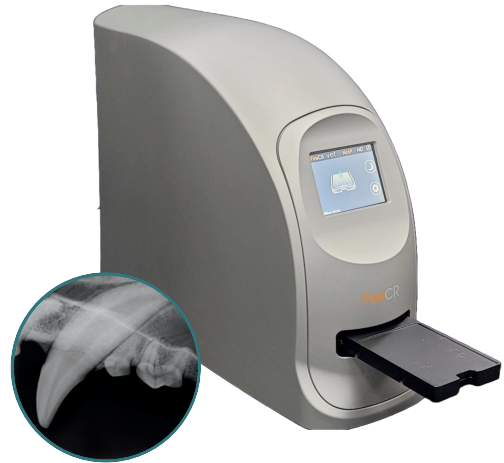
### DIGIRAY DENTAL SOLUTIONS

**PUSH & GO  
FEEDING TRAY  
IS SIMPLE AND  
QUICK TO  
OPERATE**

**FULL SIZE 4 IMAGING PLATE**  
FULL RANGE OF IMAGING PLATE SIZES 0, 1, 2, 3, 4C AND A FULL SIZE 4 ARE AVAILABLE.

**EASY-TO-USE IMAGING SOFTWARE**  
EASY IMAGE ACQUISITION, PROCESSING AND MANAGEMENT

**COMPACT AND LIGHT DESIGN**  
ONLY 13 CM WIDE AND WEIGHS 5.5 KG.



## IM3<sup>®</sup> THE GLOBAL NAME IN VETERINARY DENTISTRY

### IM3 DENTAL SOLUTIONS

**OTHER  
SENSOR SIZES  
AVAILABLE**  
Contact us  
for details



**DR X SENSOR**



**CR 7 2.0 VET**

**CR  
or  
HYBRID  
CR/DR**



**CR 8 VET**



### VET-RAY DENTAL SOLUTIONS

**VET-RAY  
DIGITAL DENTAL SENSOR  
EXCLUSIVE POSITIONER**



**VET-RAY  
WALL  
MOUNT  
SELECTABLE  
ARM LENGTH**



**VET-RAY  
HANDHELD  
CAPACITOR GENERATOR**



### MIDMARK DENTAL SOLUTIONS

**PROGENY  
IMAGING  
SOFTWARE**



**5-YEAR  
STANDARD  
MANUFACTURER'S  
WARRANTY**



**GENERATOR**

**BITE-RESISTANT  
DR SENSOR**  
ONE REPLACEMENT SENSOR AT NO  
CHARGE SHOULD DAMAGE OCCUR

# DENTISTRY

**IM3**® | THE GLOBAL NAME IN VETERINARY DENTISTRY

## IM3 EVOLUTION RANGE VETERINARY DENTAL UNITS

- Mounting Options
- Handpiece And Line Options
- High Quality Materials

**BUILD  
YOUR UNIT  
NOW!**

### IM3 EVOLVE

The perfect entry level for veterinary dentistry

### IM3 ADVANCED

Geared toward the more experienced practitioner

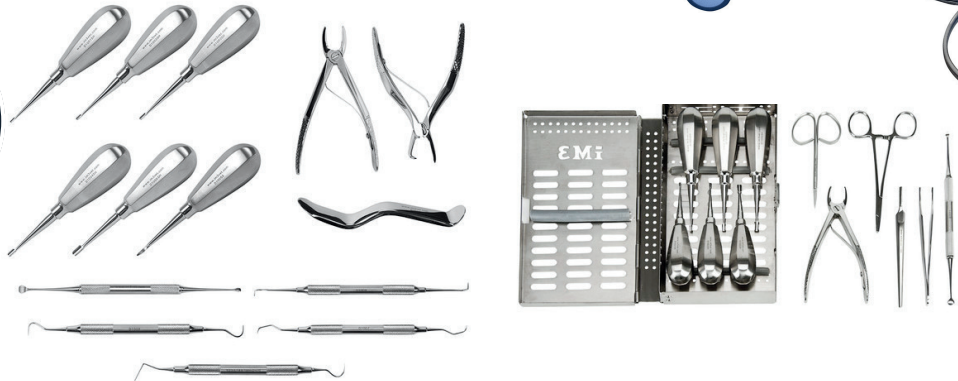
### IM3 PROFESSIONAL

Sets the standard for true veterinary dental equipment



## IM3 HAND INSTRUMENTS

**A WIDE  
VARIETY OF  
HIGH-QUALITY  
INSTRUMENTS**



  
**midmark**®

**MIDMARK  
MOBILE DENTAL  
DELIVERY SYSTEM**

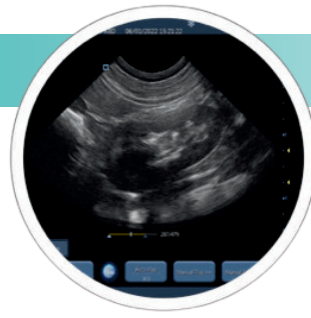
**COMPACT  
DESIGN**



- All-In-One System
- Quieter Operation
- LED Water-Level Indicator
- LED High-Speed Handpieces and Scaler
- Industry Leading 5-Year Warranty
- Increased Storage And Integrated Handles

**MIDMARK'S  
TOP CLASS  
DURABILITY**

# ULTRASOUND



## CORE IMAGING INTEGRA WIRELESS

*THE GOLD STANDARD IN HANDHELD ULTRASOUND*

### LIGHTWEIGHT AND EASY TO HANDLE

Less than 1/4 pound transducer weight

### COMPREHENSIVE FEATURE SET

- High-resolution multi-frequency construction
- Wireless connection to Android or iOS
- Veterinary-specific exam mode and calculations
- Waterproof

### COMPETITIVE PRICING

- No monthly or annual fee
- Advanced software features included at no additional cost



**3-YEAR  
WARRANTY**

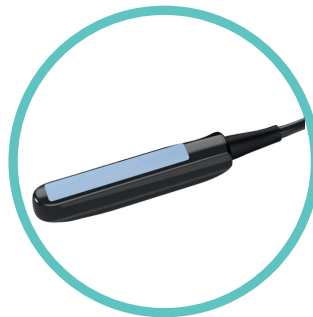
INCLUDING DROPS  
AND DEFECTS

**INDUSTRY-  
LEADING  
WARRANTY**

*MORE THAN JUST AN ULTRASOUND  
WE HELP VETS SEE CLEARLY*



**CORE IMAGING  
INTEGRA WIRED**  
THE LOWEST COST  
INTEGRA



**CORE IMAGING  
INTEGRA I WIRELESS**  
LR PROBE



**CORE IMAGING  
INTEGRA II**  
MOST VERSATILE  
WIRELESS HANDHELD ULTRASOUND

# ULTRASOUND



**HAVE YOU EVER STRUGGLED TO CAPTURE THE BEST IMAGES OF YOUR PATIENTS TO MAKE A CONFIDENT DIAGNOSIS?**

## CoreVu Scan Assist

### 5 Amazing benefits of CoreVu

- Real-time assistance, with video and audio streaming
- Sonographers dedicated to assisting you when you need it
- No additional hardware or software purchase necessary
- Allows for perfect image capture for telemedicine review
- Increases your scanning knowledge wherever you are



**CORE IMAGING NAVI**  
PRECISE IMAGING ANYWHERE



**CORE IMAGING PILOTER**  
SMART TABLET ULTRASOUND



**CORE IMAGING CLOVER**  
AFFORDABLE EXCELLENCE FOR ALL



**CORE IMAGING CLIVIA**  
THE ULTIMATE IN HIGH-RESOLUTION SCANNING



**CORE IMAGING CARNATION**  
LARGEST TOUCHSCREEN AVAILABLE

# LASERS



THE MOST ADVANCED LASER TECHNOLOGIES AVAILABLE TO VETERINARY PROFESSIONALS



**CUTTING EDGE  
EVO  
THERAPY LASER**  
THE ONLY COLD CLASS IV  
VETERINARY LASER



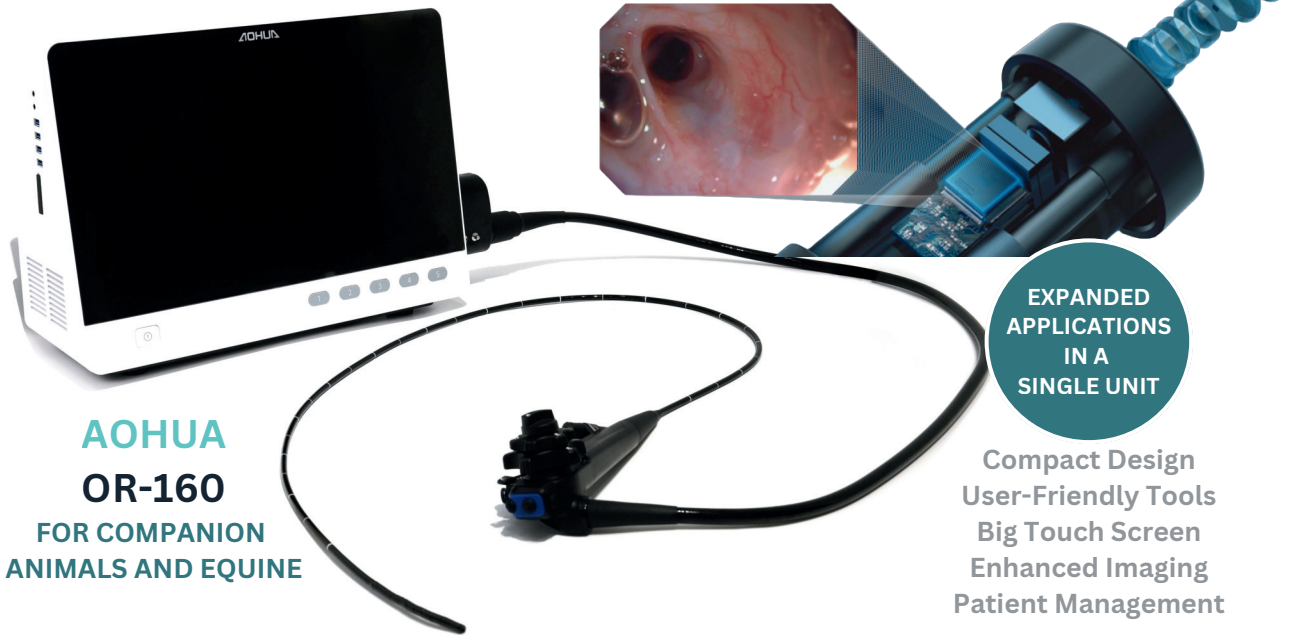
**CUTTING EDGE  
40W CO2  
SURGICAL LASER**  
THE GOLD STANDARD  
IN LASER SURGERY

MANY OTHER  
THERAPY AND  
SURGICAL LASERS  
AVAILABLE  
Contact us  
for details

# ENDOSCOPY



ALL-IN-ONE VET ENDOSCOPY SOLUTIONS



**AOHUA  
OR-160**  
FOR COMPANION  
ANIMALS AND EQUINE

EXPANDED  
APPLICATIONS  
IN A  
SINGLE UNIT

Compact Design  
User-Friendly Tools  
Big Touch Screen  
Enhanced Imaging  
Patient Management



# LIGHTING



DUAL, STAND, CEILING, WALL-MOUNT AND MANY OTHER MODELS AVAILABLE  
Contact us for details



**MEDICAL ILLUMINATION**  
**MI-550**  
COMPACT BUT POWERFUL  
EXAM LIGHT  
55 000 LUX



**MEDICAL ILLUMINATION**  
**MI-750**  
LIGHT SURGERY AND  
PROCEDURES  
75 000 LUX



**MEDICAL ILLUMINATION**  
**MI-1000 LED**  
IDEAL  
SURGERY LIGHT  
100 000 LUX



**BURTON**  
**AIM HI LED**  
SURGERY AND PROCEDURE LIGHT  
100 000 OR 70 000 LUX



**BURTON**  
**OUTPATIENT LED**  
EXAM AND MINOR  
PROCEDURE LIGHT  
90 000 LUX



**BURTON**  
**SUPER EXAM LED**  
SUPERIOR ILLUMINATION  
TO A FOCUSED AREA



**MIDMARK**  
**120 LED**  
EXAM LIGHT  
LONG LIFE AND  
AFFORDABILITY  
35 000 LUX



**MIDMARK**  
**130 LED**  
TREATMENT LIGHT  
EFFORTLESS,  
FLEXIBLE LIGHT  
60 000 LUX

# ANESTHESIA



HIGH-END ANESTHESIA MACHINES



**UXR**

**VA-1**

VARIETY OF CONFIGURATIONS  
AND APPLICATIONS

WALL MOUNTED - TABLETOP - STAND

**UXR**  
**BB-1**  
**BAIN BLOCK**  
HIGH QUALITY AIRWAY  
PRESSURE GAUGE.



**UXR**  
**ANESTHESIA**  
**ACCESSORIES**

SD30 TROLLEY  
BREATHING BAGS  
OXYGEN HOSE  
WASTE GAS HOSE



  
**midmark**<sup>®</sup>

MANY MODELS TO CHOOSE FROM



**MIDMARK**  
**VME2**  
TABLETOP/WALL MOUNT



**MIDMARK**  
**VME2**  
COMPACT DESIGN



**MIDMARK**  
**VMS**  
SMALL ANIMAL  
ANESTHESIA



**MIDMARK**  
**VMS PLUS**  
FUNCTIONAL AND  
CONVENIENT

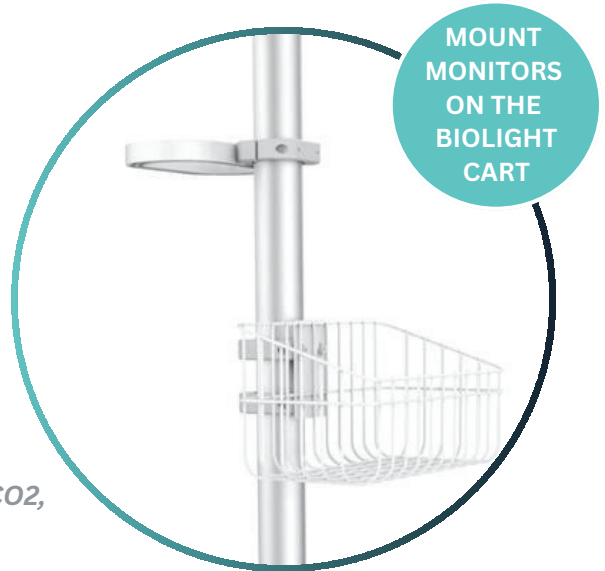
# PATIENT MONITORING



**REAL-TIME VITAL SIGNS TRACKING  
WITH ACCURATE, RESPONSIVE  
CLINICAL AND DIAGNOSTIC DATA**

## Semi Modular Premium Patient Monitors

- Up to 3 module slots providing flexible configuration
- Standard with Masimo SpO2, Masimo mainstream EtCO2, as well as Suntech NIBP
- Built-in anesthesia report functions



### BIOLIGHT

**G10**

3.9 KG

10.1" TFT LCD



### BIOLIGHT

**G15**

5.5 KG

15.6" TFT LCD

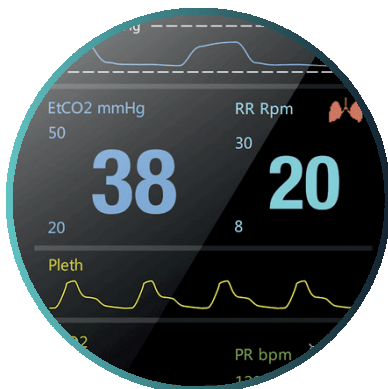


### BIOLIGHT

**G12**

4.6 KG

12.1" TFT LCD



### BIOLIGHT M850 VET

- 3 LEAD ECG + SPO2
- SPO2 & PULSE RATE
- PLETH WAVEFORM & PERFUSION INDEX
- HEART RATE & ECG WAVEFORM
- RESPIRATION RATE
- RESPIRATION WAVEFORM

# PATIENT MONITORING

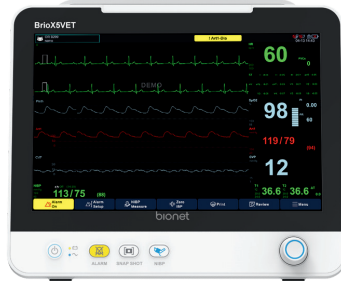
# bionet

INDUSTRY'S  
LONGEST  
WARRANTY  
4 YEARS  
ON BRIO

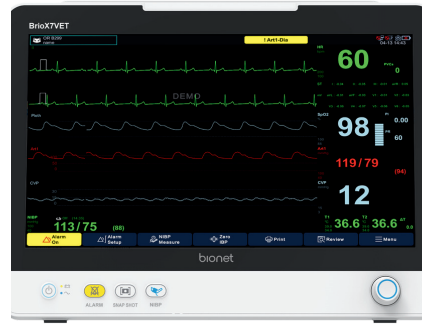
ALL  
PROBES AND  
ACCESSORIES  
AVAILABLE



**BIONET  
BRIO X3VET**  
UNCOMPROMISING  
PERFORMANCE



**BIONET  
BRIO X5VET**  
MAXIMUM  
VERSATILITY



**BIONET  
BRIO X7VET**  
ULTIMATE  
PERFORMANCE



**BIONET  
EtCO2 SENSOR  
MAINSTREAM**



**BIONET  
EtCO2 SENSOR  
SIDESTREAM**



**BIONET  
OXY9WAVE  
VET PULSE MONITOR**



**BIONET  
O'PET CURV  
WIRELESS MONITORING**

## midmark®



**MIDMARK  
MULTIPARAMETER  
MONITORS**  
SAFER, MORE EFFICIENT  
ANESTHETIC PROCEDURES

## ZOMEDICA®



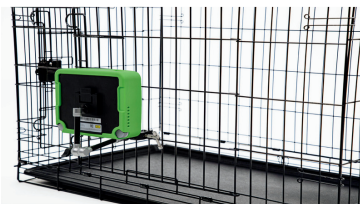
THE ONLY  
ZERO-TOUCH  
VITAL SIGNS  
REMOTE  
MONITOR

**ZOMEDICA  
VETGUARDIAN PLUS**

## PARKS Medical Electronics, Inc.



**PARKS  
811-B  
ULTRASONIC DOPPLER  
FLOW DETECTOR**



**MOUNT THE DEVICE**  
ATTACH TO A KENNEL  
OR IV POLE



**ACCESS VITALS  
MONITORING**  
CONTINUOUSLY MONITORS  
TEMPERATURE, PULSE, AND  
RESPIRATION **WITH LIVE VIDEO**

# FLUID PUMPS



**UXR**  
**VSP-1**  
VET SYRINGE PUMP



**UXR**  
**VIP-1**  
VET INFUSION PUMP

WITH  
INTEGRATED  
FLUID  
WARMER



**MIDMARK**  
**IV FLUID WARMER**  
DESIGNED TO HELP  
REDUCE THE RISK OF  
HYPOTHERMIA



# MICROSCOPES



**LW SCIENTIFIC**  
**14 INFINITY**  
4 OBJECTIVE  
MICROSCOPE



**LW SCIENTIFIC**  
**REVELATION III DIN**  
SUPERIOR PERFORMANCE  
AT A GREAT VALUE

CAMERA  
OPTIONS  
AVAILABLE

# STERILIZERS & AUTOCLAVES



**MIDMARK**  
**NEXT GENERATION**  
**M9** - 9" STEAM STERILIZER  
**M11** - 11" STEAM STERILIZER



**TUTTNAUER**  
**T-TOP 10 & 11**  
10" AUTOMATIC AUTOCLAVE  
11" AUTOMATIC AUTOCLAVE



**TUTTNAUER**  
**TVET 9M & 11M**  
9" MANUAL STERILIZER  
11" MANUAL STERILIZER



**TUTTNAUER**  
**ULTRASONIC CLEANER**  
1 GALLON, 3 GALLONS &  
6.5 GALLONS OPTIONS

# CENTRIFUGES



**LW SCIENTIFIC**  
**E8**  
VARIABLE-SPEED CENTRIFUGE



**LW SCIENTIFIC**  
**ZipCOMBO**  
CENTRIFUGE



**LW SCIENTIFIC**  
**COMBO V24T**  
CENTRIFUGE



**STATSPIN**  
**VT**  
CENTRIFUGE

# PATIENT WARMING



## HOT DOG

### THE MOST ADVANCED PATIENT WARMING SYSTEM

- Reusable, Heavy-Weight, Flexible, Easy To Clean Mattresses
- Touchscreen Temperature Management Controller
- Warms Up In Just A Few Minutes!



#### HOT DOG

**U501V DISPERSIVE ELECTRODE MATTRESS**  
KEEP YOUR PATIENT WARM  
DURING ELECTROSURGERY  
NO GROUNDING PLATE REQUIRED



#### HOT DOG

**VETERINARY PATIENT WARMING**  
CONVERT LOW-VOLTAGE ELECTRICITY  
INTO SAFE, PRECISE, CONSISTENT HEAT

**NO WATER,  
NO AIR  
JUST SAFE  
EVEN HEAT!**



BLANKETS  
available  
IN 3 SIZES

**ADROIT  
VETPRO**  
FORCED AIR  
PATIENT  
WARMING



The only  
heat therapy  
pump that  
uses tap  
water

**ADROIT  
HTP-1500**  
HYPO-HYPERThERMIA  
WATER THERAPY



**ADROIT  
SOFT TEMP**  
REUSABLE PADS  
AVAILABLE IN 4  
SIZES

# ELECTRO/CRYO SURGERY

# Bovie

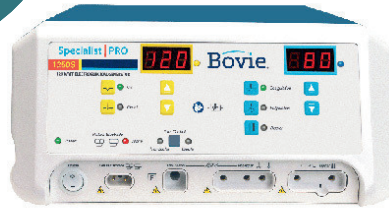


**BOVIE**  
ELECTROSURGERY  
SYSTEM  
WITH SMOKE EVACUATION

REPLACE  
RETURN ELECTRODE  
WITH A  
HOT DOG  
COMPATIBLE  
WARMING  
MATTRESS!



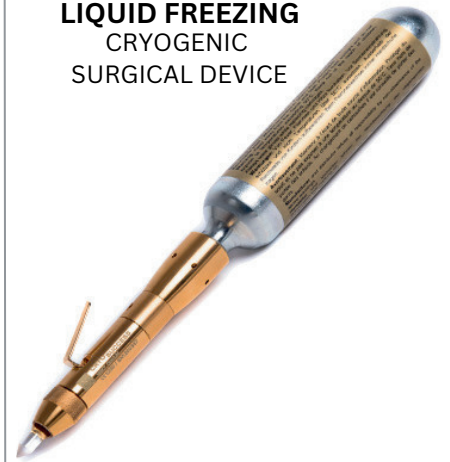
**BOVIE**  
SMOKE SHARK II  
SMOKE AND PARTICLE  
REMOVAL



**BOVIE**  
1250S SPECIALIST PRO  
HIGH FREQUENCY  
ELECTROSURGICAL GENERATOR

CRYOSUCCESS SWISS MADE  
LIQUIDFREEZING

**CRYOSUCCESS**  
LIQUID FREEZING  
CRYOGENIC  
SURGICAL DEVICE



# X-RAY PROTECTION & ACCESSORIES



**UXR**  
THYROID SHIELD



**UXR**  
OPEN PALM MITTS



**UXR**  
ADJUSTABLE APRON



**UXR**  
ADJUSTABLE APRON WITH  
INTEGRATED THYROID SHIELD  
(SEWN-ON)



**UXR**  
FOAM V-TROUGH  
POSITIONING SET

# REHABILITATION



## LOOP ASSISI

At Home Or In-Clinic Use

- Accelerate healing
- Decrease pain and inflammation
- Decrease or eliminate the need for pharmaceuticals and opioids



## DENTALOOP ASSISI

Smile! DentalOOP Is Here!

- Helps reduce oral and dental pain and inflammation



## PULSEVET ZOMEDICA

Shock Wave Therapy System

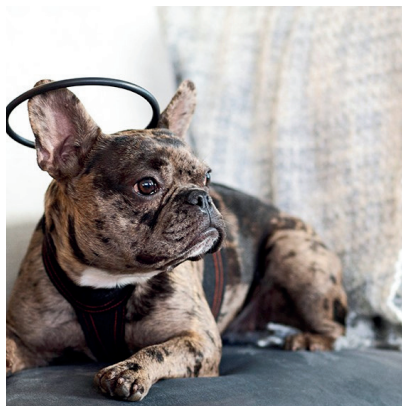
- Small, fast, powerful, and clinically proven
- The #1 shock wave therapy in regenerative veterinary medicine



## LOOP LOUNGE ASSISI

Total Body Treatment For Dogs And Cats

- Three pad sizes
- Removable waterproof washable liner
- Rechargeable system designed to deliver 6,000 nose to tail tPEMF treatments



## CALMER CANINE ASSISI

A Drug-Free Solution To Canine Separation Anxiety

- Significantly reduces the signs of CSA
- Improves the quality of life
- Long-lasting results
- May also help with other anxieties



## UNDERWATER TREADMILL HYDRO PHYSIO

Physiotherapy For Dogs

- Exceptional build quality
- Practitioner-friendly features
- Excellent safety and accessibility



# BRACES



**YOUR PET'S  
PATH TO RECOVERY  
STARTS HERE**



**BALTO JUMP**  
KNEE  
BRACE



**BALTO LIGATEK**  
ADJUSTABLE HINGED  
KNEE BRACE



**BALTO HOCK**  
HOCK  
BRACE



**BALTO FLEXOR**  
ADJUSTABLE HOCK  
BRACE



**BALTO SPLINT**  
CARPAL/TARSAL  
LAXITY SPLINT



**BALTO BONE**  
FRACTURE  
BRACE



**BALTO PULL**  
BRACE FOR HYPERFLEXION  
PHALANGES



**BALTO SOFT**  
ELBOW  
BRACE



**BALTO SOFT PLUS**  
DOUBLE ELBOW  
BRACE



**BALTO LUX**  
SHOULDER  
BRACE



**BALTO JOINT**  
CARPAL  
COMPRESSION BAND



**BALTO NECK**  
RIGID  
NECK BRACE



**BALTO NECK ECO**  
E-COLLAR  
ALTERNATIVE



**BALTO LIFE**  
HIP DYSPLASIA  
BRACE



**BALTO BODY LIFT**  
BODY HARNESS  
WITH HANDLES



**BALTO UP**  
REAR HARNESS  
SUPPORT



**BALTO LINK**  
REAR LEGS  
CONTROL



**BALTO HOCK CAT**  
HOCK BRACE FOR  
FELINES



**BALTO SPLINT CAT**  
CARPAL/METATARSAL  
LAXITY SPLINT FOR FELINES



**BALTO NECK ECO CAT**  
E-COLLAR ALTERNATIVE  
FOR FELINES



**BALTO NECK CAT**  
RIGID NECK BRACE  
FOR FELINES



**BALTO BONE CAT**  
FRACTURE BRACE  
FOR FELINES



**BALTO PULL CAT**  
CARPAL HYPERFLEXION  
BRACE FOR FELINES

# TUBS, TABLES & SCALES



FULL  
MIDMARK  
PRODUCT  
PORTFOLIO  
AVAILABLE

PLEASE CONTACT UXR  
FOR MORE INFORMATION



**MIDMARK  
FOLD-DOWN  
WALL MOUNT  
COMPACT EXAM TABLE**

**MIDMARK  
FOLD-UP  
WALL MOUNT  
EXAM TABLE**



**MIDMARK  
DRY TREATMENT  
TABLE  
FIXED HEIGHT DRY  
PREP TABLE**



**MIDMARK  
WET TREATMENT  
TABLE  
CUSTOMIZABLE  
CONFIGURATIONS**



**MIDMARK  
FLAT-TOP  
DENTAL/SURGERY TABLE  
ADJUSTABLE HYDRAULIC**



**MIDMARK  
V-TOP  
SURGERY TABLE  
ADJUSTABLE HYDRAULIC**



**MIDMARK  
MOBILE ELECTRIC LIFT TABLE  
MULTI-PURPOSE  
TABLE**



**BRECKNELL  
PS500  
SCALE**



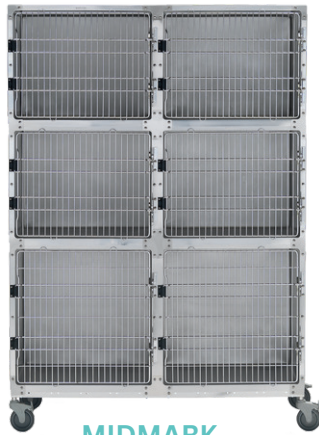
**BRECKNELL  
MS-15  
SCALE**

# CAGES & CONTAINMENT

Custom solutions configured to your exact needs!



**MIDMARK**  
STAINLESS STEEL  
CAGES



**MIDMARK**  
STAINLESS STEEL  
CAGE ASSEMBLIES



**MIDMARK**  
GLASS BACK  
CAGES



**MIDMARK**  
STAINLESS STEEL  
SINGLE KENNELS

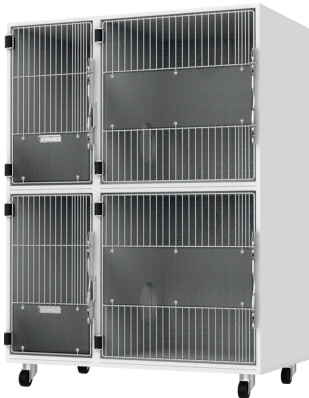


**MIDMARK**  
FRONT-TO-BACK  
KENNEL



Minimize fear, anxiety and stress for your furry guests

**MIDMARK**  
CANINE QUIET  
COTTAGES



**MIDMARK**  
STAINLESS STEEL  
CAT SUITES



**MIDMARK**  
FELINE COMFORT  
SUITES



UNIQUE  
VIEWING DOME



**MIDMARK**  
CAT PLAY  
AND SLEEP



Leading Veterinary Imaging  
& Equipment Solutions  
Provider in Canada  
SINCE 1949

514-695-4114  
1-877-440-4494  
info@uxr.ca  
UXR.ca