



**Leading Veterinary Imaging  
& Equipment Solutions  
Provider in Canada**

SINCE 1949

## 2026 CATALOG

---



**Leading Veterinary Imaging  
& Equipment Solutions  
Provider in Canada**

## OPENING A NEW CLINIC?

ASK ABOUT OUR  
TAILORED PROGRAMS  
FOR NEW  
PRACTICES



**QUESTION?  
WANT A QUOTE?  
CONTACT US TODAY!**  
**1-877-440-4494**  
**info@uxr.ca**

## FOR **ALL** YOUR VETERINARY IMAGING AND EQUIPMENT SOLUTIONS

- TRUSTED PARTNER SINCE 1949

## UNMATCHED EXPERTISE AND SERVICE YOU CAN TRUST

- DEDICATED TEAMS OF RESPONSIVE, FRIENDLY PROFESSIONALS THAT ARE ATTENTIVE TO YOUR NEEDS

## PROUDLY CANADIAN

- COAST-TO-COAST SALES, INSTALLATION, TRAINING, TECHNICAL SUPPORT, SERVICE AND MAINTENANCE DELIVERED BY LOCAL UXR EXPERTS IN:
  - WESTERN CANADA
  - ONTARIO
  - QUEBEC
  - ATLANTIC CANADA

FOR SERVICE, PREVENTATIVE MAINTENANCE OR TECHNICAL SUPPORT : [SERVICE@UXR.COM](mailto:SERVICE@UXR.COM)

## 2026 CATALOG

UXR X-RAY SYSTEMS.....	3	FLUID PUMPS.....	16
UXR DIGITAL IMAGING SOLUTIONS.....	4	MICROSCOPES.....	16
UXR INTRAORAL SOLUTIONS.....	5	STERILIZERS & AUTOCLAVES.....	16
X-RAY SYSTEMS.....	6	CENTRIFUGES.....	16
PORTABLE GENERATORS / MOBILE DR.....	7	PATIENT WARMING.....	17
DENTAL X-RAY.....	8	ELECTRO/CRYO SURGERY.....	18
DENTISTRY.....	9	X-RAY PROTECTION & ACCESSORIES.....	18
ULTRASOUND.....	11	REHABILITATION.....	19
LASERS.....	12	BRACES.....	20
ENDOSCOPY.....	12	TUBS, TABLES & SCALES.....	21
LIGHTING.....	13	CAGES & CONTAINMENT.....	22
ANESTHESIA.....	14	CLINICAL-GRADE CABINETS.....	23
PATIENT MONITORING.....	15	PARTNERS.....	24



# UXR X-RAY SYSTEMS

BY THE  
VETERINARY  
IMAGING  
EXPERTS IN  
CANADA

FLEXIBLE  
PURCHASING  
PROGRAMS  
NO UPFRONT COSTS  
OWNERSHIP PROGRAMS  
AVAILABLE

## FULLY INTEGRATED WITH UXR DR SOLUTIONS

- ✓ PARAMETERS CONFIGURED AUTOMATICALLY
- ✓ ENHANCED WORKFLOW
- ✓ ALWAYS OPTIMAL EXPOSURE - ELIMINATES DOSAGE ERRORS



## X-RAY SYSTEMS

UXR X-ray systems deliver **best-in-class technical features for veterinary applications** at a **highly competitive cost of ownership**.

**Compatible with any DR Solution** : Manual dose entry or full integration with UXR DR solutions.

**Small Footprint** : Compact design ideal for smaller X-ray rooms and space-constrained clinics.

**Easy Foot Controls** : Helps you stay focused on patient handling and positioning.

**Powerful, Efficient Generator** : Compact high-frequency generator 32 kW / 400 mA.

**Floating Table** : 1.68m (5.5 ft) table with smooth 4-way movement for precise patient alignment.

**Sharp Imaging** : 1.0 / 2.0 focal spots; or optional 0.6 / 1.3 for exotics and specialty practices.

**Compatible With Any Detector** : Adjustable 43 cm × 43 cm (17" × 17") detector tray.

**Built For Daily Clinical Use** : Heavy-duty table with weight capacity exceeding 150 kg.

**Warranty Options** : Standard 2-year warranty, with an optional 5-year limited warranty available.

# UXR DIGITAL IMAGING SOLUTIONS



COAST TO COAST  
PREMIUM  
INSTALLATION  
AND SERVICE

- ✓ Training
- ✓ Remote Support
- ✓ Software Updates

2-YEAR  
STANDARD OR  
**5-YEAR**  
EXTENDED WARRANTY  
&  
REMOTE SUPPORT

BY THE  
VETERINARY  
IMAGING  
EXPERTS IN  
CANADA

## UXR **DIGITAL IMAGING** SOLUTIONS

UXR's turnkey Direct Radiography Solutions seamlessly combine **advanced image acquisition software**, **cutting-edge computer hardware**, and **high-resolution Cesium detectors** to deliver **unmatched performance**.

**Superior Image Quality** : Industry-leading image clarity with lowest dose of radiation.

**Flexible Configurations** : Choose between HD/wired or high-performance SHD/wireless.

**Streamlined Workflow** : Optimized for efficient veterinary X-ray imaging processes.

**Versatile Solutions** : Ideal for retrofits or seamless integration with UXR X-ray systems.

**Seamless Integration** : Supports integration with compatible Practice Management Software.

**Multilingual** : UXR View Software available in English and French.

**Reliable Support** : Comprehensive training and remote assistance.

# UXR INTRAORAL SOLUTIONS



2-YEAR  
STANDARD OR  
**5-YEAR**  
EXTENDED WARRANTY  
&  
REMOTE SUPPORT  
INCLUDING FIRST  
ACCIDENTAL  
DAMAGE

## UXR **INTRAORAL IMAGING** SOLUTIONS

BY THE VETERINARY IMAGING EXPERTS IN CANADA  SINCE 1949

UXR's Intraoral Imaging Solutions combine **ultra-low dose/high resolution, intraoral DR sensors and computer hardware** with **advanced veterinary acquisition software**.

**Choice of Sizes** : Available in sensor size 2 (regular) and size 1 (small).

**Flexible Reporting** : Easily generate examination reports.

**Multilingual** : UXR View Software available in English and French.

**Streamlined Workflow** : Optimized for efficient veterinary X-ray imaging processes.

**Seamless Integration** : Supports integration with compatible Practice Management Software.

**Ergonomic Design** : Ultra-thin kevlar housing, smooth edges, rounded corners, and reinforced flexible cable.

**Reliable Support** : Includes a 2-year limited warranty with comprehensive training and remote assistance.



# X-RAY SYSTEMS



**OVER 20  
VETERINARY  
X-RAY  
SOLUTIONS**



**VET-RAY  
DIGITAL DX-V**  
FULLY INTEGRATED DR SOLUTION



**VET-RAY  
STANDARD VET**  
STANDARD X-RAY SYSTEM



**VET-RAY  
AGILITY SURGICAL ARM**  
FLUOROSCOPY



**VET-RAY  
ELITE VET**  
VARIABLE TABLE HEIGHT  
AND SUPER HD



**VET-RAY  
COMPACT VET**  
SMALLER FOOTPRINT



**VET-RAY  
MULTI VET**  
CT, DR AND FLUOROSCOPY



**VET-RAY  
PREMIUM VET**  
HORIZONTAL BEAM  
APPLICATIONS

# PORTABLE GENERATORS



**MINXRAY**  
**TR90B**  
BATTERY-POWERED  
QUICKLY PROGRAMMABLE



**UXR**  
**PORTABLE X**  
SMALL, LIGHT,  
LARGE CAPACITY LITHIUM BATTERY



**POSKOM**  
**VET-20BT**  
BATTERY OPERATED  
LIGHT AND COMPACT

# MOBILE DR SOLUTIONS



THE VETERINARY IMAGING EXPERTS IN CANADA



**UXR**  
**DR EQUINE SOLUTIONS**  
THE WORLD'S FIRST FLEXIBLE  
TFT CSI X-RAY DETECTOR  
DESIGNED FOR EQUINE IMAGING  
10" X 13" DR



**UXR**  
**DR MOBILE SOLUTIONS**  
THE MOST ADVANCED AND  
FLEXIBLE PORTABLE  
DR SOLUTION  
14" X 17" OR 17" X 17" DR



**VET-RAY**  
**WEPX 2.0**  
BUILT FOR EXTREME PORTABLE USE  
ALL DAY IMAGING, NO MATTER  
HOW LONG YOUR DAY IS  
10" X 12" DR

# DENTAL X-RAY



## UXR INTRAORAL IMAGING SOLUTIONS



**PREMIUM AND COST-EFFECTIVE  
DR DENTAL SOLUTION**  
COMPACT, HIGH-RESOLUTION  
DETECTOR WITH INTUITIVE SOFTWARE  
FOR SHARP AND PRECISE RESULTS

**5 YEAR OPTIONAL EXTENDED  
WARRANTY AND SUPPORT**  
INCLUDING FIRST ACCIDENTAL DAMAGE



**IM3**® THE GLOBAL NAME IN  
VETERINARY DENTISTRY

## IM3 DENTAL SOLUTIONS



OTHER  
SENSOR SIZES  
AVAILABLE  
Contact us  
for details

DR X SENSOR



CR 7.2.0 VET



CR 8 VET



## VET-RAY DENTAL SOLUTIONS

**VET-RAY  
DIGITAL DENTAL SENSOR  
EXCLUSIVE POSITIONER**



**VET-RAY  
WALL  
MOUNT  
SELECTABLE  
ARM LENGTH**



**VET-RAY  
HANDHELD  
CAPACITOR GENERATOR**



## MIDMARK DENTAL SOLUTIONS

**PROGENY  
IMAGING  
SOFTWARE**



**5-YEAR  
STANDARD  
MANUFACTURER'S  
WARRANTY**



GENERATOR



**BITE-RESISTANT  
DR SENSOR**  
ONE REPLACEMENT SENSOR AT NO  
CHARGE SHOULD DAMAGE OCCUR





# DENTISTRY

**IM3®** | THE GLOBAL NAME IN  
VETERINARY DENTISTRY

## IM3 EVOLUTION RANGE VETERINARY DENTAL UNITS

- Mounting Options
- Handpiece And Line Options
- High Quality Materials

**BUILD  
YOUR UNIT  
NOW!**

### IM3 EVOLVE

The perfect entry level for veterinary dentistry

### IM3 ADVANCED

Geared toward the more experienced practitioner

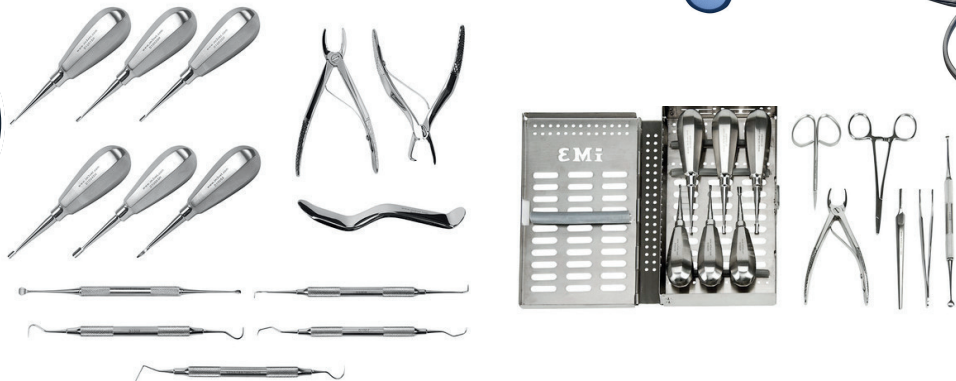
### IM3 PROFESSIONAL

Sets the standard for true veterinary dental equipment



## IM3 HAND INSTRUMENTS

A wide  
variety of  
high-quality  
instruments



**midmark®**

**MIDMARK  
MOBILE DENTAL  
DELIVERY SYSTEM**

**COMPACT  
DESIGN**



- All-In-One System
- Quieter Operation
- LED Water-Level Indicator
- LED High-Speed Handpieces and Scaler
- Industry Leading 5-Year Warranty
- Increased Storage And Integrated Handles

**MIDMARK'S  
TOP CLASS  
DURABILITY**

# ULTRASOUND



## CORE IMAGING INTEGRA WIRELESS

*THE GOLD STANDARD IN HANDHELD ULTRASOUND*

### LIGHTWEIGHT AND EASY TO HANDLE

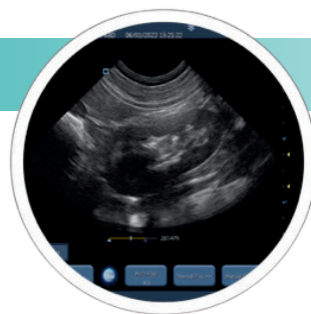
Less than 1/4 pound transducer weight

### COMPREHENSIVE FEATURE SET

High-resolution multi-frequency construction  
Wireless connection to Android or iOS  
Veterinary-specific exam mode and calculations  
Waterproof

### COMPETITIVE PRICING

No monthly or annual fee  
Advanced software features included at no additional cost



**3-YEAR  
WARRANTY**

INCLUDING DROPS  
AND DEFECTS

*MORE THAN JUST AN ULTRASOUND  
WE HELP VETS SEE CLEARLY*



**CORE IMAGING  
INTEGRA WIRED**  
THE LOWEST COST  
INTEGRA



**CORE IMAGING  
INTEGRA I WIRELESS**  
LR PROBE



**CORE IMAGING  
INTEGRA II**  
MOST VERSATILE  
WIRELESS HANDHELD ULTRASOUND

# ULTRASOUND



CORE IMAGING

*HAVE YOU EVER STRUGGLED TO CAPTURE  
THE BEST IMAGES OF YOUR PATIENTS TO  
MAKE A CONFIDENT DIAGNOSIS?*

## CoreVu Scan Assist

### 5 Amazing benefits of CoreVu

- Real-time assistance, with video and audio streaming
- Sonographers dedicated to assisting you when you need it
- No additional hardware or software purchase necessary
- Allows for perfect image capture for telemedicine review
- Increases your scanning knowledge wherever you are



ONE ON ONE  
TRAINING  
LEARN FROM  
ANYWHERE



### CORE IMAGING NAVI

PRECISE IMAGING  
ANYWHERE



### CORE IMAGING PILOTER

SMART TABLET  
ULTRASOUND



### CORE IMAGING CLOVER

AFFORDABLE  
EXCELLENCE FOR ALL



### CORE IMAGING CLIVIA

THE ULTIMATE IN  
HIGH-RESOLUTION SCANNING



### CORE IMAGING CARNATION

LARGEST TOUCHSCREEN  
AVAILABLE



# LASERS



THE MOST ADVANCED LASER  
TECHNOLOGIES AVAILABLE TO  
VETERINARY PROFESSIONALS



**CUTTING EDGE  
EVO  
THERAPY LASER**  
THE ONLY COLD CLASS IV  
VETERINARY LASER



**CUTTING EDGE  
40W CO2  
SURGICAL LASER**  
THE GOLD STANDARD  
IN LASER SURGERY

MANY OTHER  
THERAPY AND  
SURGICAL LASERS  
AVAILABLE  
Contact us  
for details

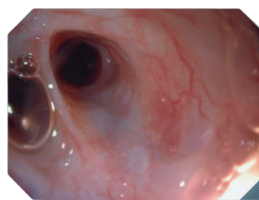
# ENDOSCOPY



ALL-IN-ONE VET ENDOSCOPY SOLUTIONS



**AOHUA  
OR-160**  
FOR COMPANION  
ANIMALS AND EQUINE



EXPANDED  
APPLICATIONS  
IN A  
SINGLE UNIT

Compact Design  
User-Friendly Tools  
Big Touch Screen  
Enhanced Imaging  
Patient Management

# LIGHTING



Medical Illumination

DUAL, STAND,  
CEILING, WALL-  
MOUNT AND MANY  
OTHER MODELS  
AVAILABLE  
Contact us  
for details



**MEDICAL ILLUMINATION**

**MI-550**

COMPACT BUT POWERFUL  
EXAM LIGHT  
55 000 LUX



**MEDICAL ILLUMINATION**

**MI-750**

LIGHT SURGERY AND  
PROCEDURES  
75 000 LUX



**MEDICAL ILLUMINATION**

**MI-1000 LED**

IDEAL  
SURGERY LIGHT  
100 000 LUX

**burton®**



**BURTON**

**AIM HI LED**

SURGERY AND PROCEDURE LIGHT  
100 000 OR 70 000 LUX



**BURTON**

**OUTPATIENT LED**

EXAM LIGHT  
90 000 LUX



**BURTON**

**SUPER EXAM LED**

SUPERIOR ILLUMINATION  
TO A FOCUSED AREA

**midmark®**

**MIDMARK**

**120 LED**

EXAM LIGHT  
LONG LIFE AND  
AFFORDABILITY  
35 000 LUX



**MIDMARK**

**130 LED**

TREATMENT LIGHT  
EFFORTLESS,  
FLEXIBLE LIGHT  
60 000 LUX

# ANESTHESIA



## HIGH-END ANESTHESIA MACHINES



**UXR**

**VA-1**

VARIETY OF CONFIGURATIONS  
AND APPLICATIONS

WALL MOUNTED - TABLETOP - STAND

**UXR**

**BB-1**

**BAIN BLOCK**

HIGH QUALITY AIRWAY  
PRESSURE GAUGE.



**UXR**

**ANESTHESIA  
ACCESSORIES**

SD30 TROLLEY  
BREATHING BAGS  
OXYGEN HOSE  
WASTE GAS HOSE

  
**midmark®**

MANY MODELS TO CHOOSE FROM



**MIDMARK**

**VME2**

TABLETOP/WALL MOUNT



**MIDMARK**

**VME2**

COMPACT DESIGN



**MIDMARK**

**VMS**

SMALL ANIMAL  
ANESTHESIA



**MIDMARK**

**VMS PLUS**

FUNCTIONAL AND  
CONVENIENT



# PATIENT MONITORING

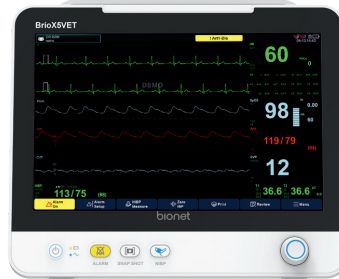
bionet

INDUSTRY'S  
LONGEST  
WARRANTY  
4 YEARS  
ON BRIO

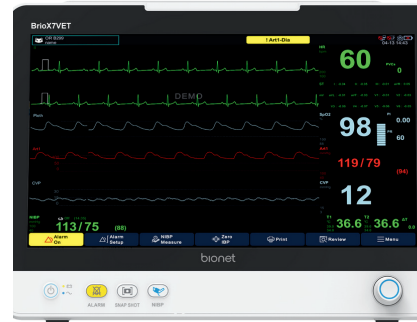
ALL  
PROBES AND  
ACCESSORIES  
AVAILABLE



**BIONET  
BRIO X3VET**  
UNCOMPROMISING  
PERFORMANCE



**BIONET  
BRIO X5VET**  
MAXIMUM  
VERSATILITY



**BIONET  
BRIO X7VET**  
ULTIMATE  
PERFORMANCE



**BIONET  
EtCO2 SENSOR  
MAINSTREAM**



**BIONET  
EtCO2 SENSOR  
SIDESTREAM**



**BIONET  
OXY9WAVE  
VET PULSE MONITOR**



**BIONET  
O'PET CURV  
WIRELESS MONITORING**

midmark®



**MIDMARK  
MULTIPARAMETER  
MONITORS**  
SAFER, MORE EFFICIENT  
ANESTHETIC PROCEDURES

BLT® BIOLIGHT



**BIOLIGHT  
M850 VET  
PORTABLE  
VITAL MONITOR**

**PARKS**  
Medical Electronics, Inc.



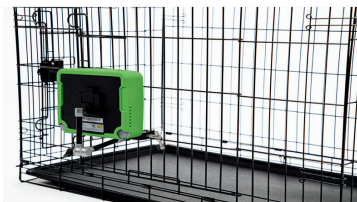
**PARKS  
811-B  
ULTRASONIC DOPPLER  
FLOW DETECTOR**

ZOMEDICA®



**ZOMEDICA  
VETGUARDIAN PLUS**

THE ONLY  
ZERO-TOUCH  
VITAL SIGNS  
REMOTE  
MONITOR



**MOUNT THE DEVICE**  
ATTACH TO A KENNEL  
OR IV POLE

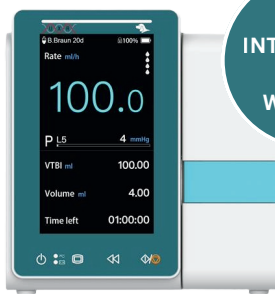


**ACCESS VITALS  
MONITORING**  
CONTINUOUSLY MONITORS  
TEMPERATURE, PULSE, AND  
RESPIRATION WITH LIVE VIDEO

# FLUID PUMPS



**UXR**  
**VSP-1**  
VET SYRINGE PUMP



**UXR**  
**VIP-1**  
VET INFUSION PUMP

WITH  
INTEGRATED  
FLUID  
WARMER

**midmark®**

**MIDMARK**  
**IV FLUID WARMER**  
DESIGNED TO HELP  
REDUCE THE RISK OF  
HYPOTHERMIA



# MICROSCOPES



**LW SCIENTIFIC**  
**I4 INFINITY**  
4 OBJECTIVE  
MICROSCOPE



**LW SCIENTIFIC**  
**REVELATION III DIN**  
SUPERIOR PERFORMANCE  
AT A GREAT VALUE

CAMERA  
OPTIONS  
AVAILABLE

# STERILIZERS & AUTOCLAVES



**MIDMARK**  
**NEXT GENERATION**  
**M9** - 9" STEAM STERILIZER  
**M11** - 11" STEAM STERILIZER



**TUTTNAUER**  
**T-TOP 10 & 11**  
10" AUTOMATIC AUTOCLAVE  
11" AUTOMATIC AUTOCLAVE



**TUTTNAUER**  
**TVET 9M & 11M**  
9" MANUAL STERILIZER  
11" MANUAL STERILIZER



**TUTTNAUER**  
**ULTRASONIC CLEANER**  
1 GALLON, 3 GALLON & 6.5  
GALLON OPTIONS

# CENTRIFUGES



**LW SCIENTIFIC**  
**E8**  
VARIABLE-SPEED CENTRIFUGE



**LW SCIENTIFIC**  
**ZipCOMBO**  
CENTRIFUGE



**LW SCIENTIFIC**  
**COMBO V24T**  
CENTRIFUGE

StatSpin



**STATSPIN**  
**VT**  
CENTRIFUGE

# PATIENT WARMING



## HOT DOG

### THE MOST ADVANCED PATIENT WARMING SYSTEM

- Reusable, Heavy-Weight, Flexible, Easy To Clean Blankets
- Touchscreen Temperature Management Controller
- Warms Up In Just A Few Minutes!



## HOT DOG

### U501V DISPERSIVE ELECTRODE BLANKET

KEEP YOUR PATIENT WARM  
DURING ELECTROSURGERY  
NO GROUNDING PLATE REQUIRED



## HOT DOG

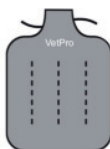
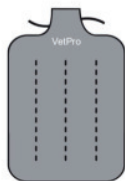
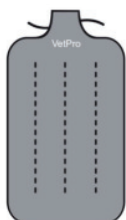
### VETERINARY PATIENT WARMING CONVERT LOW-VOLTAGE ELECTRICITY INTO SAFE, PRECISE, CONSISTENT HEAT

NO WATER,  
NO AIR  
JUST SAFE  
EVEN HEAT!



BLANKETS  
available  
IN 3 SIZES

## ADROIT VETPRO FORCED AIR PATIENT WARMING



The only  
heat therapy  
pump that  
uses tap  
water

## ADROIT HTP-1500 HYPO-HYPERThERMIA WATER THERAPY



## ADROIT VETPRO BLANKETS AVAILABLE IN 18 CONFIGURATIONS



# ELECTRO/CRYO SURGERY

## Bovie

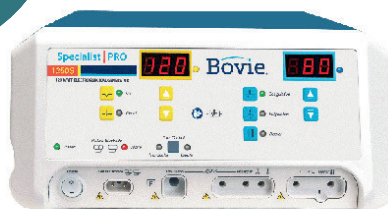


**BOVIE**  
**ELECTROSURGERY**  
**SYSTEM**  
WITH SMOKE EVACUATION

REPLACE  
RETURN ELECTRODE  
WITH A  
HOT DOG  
COMPATIBLE  
WARMING  
BLANKET!



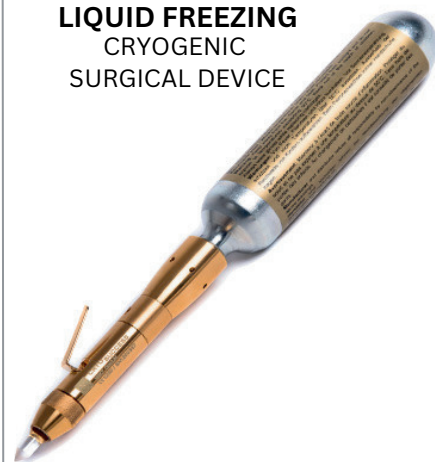
**BOVIE**  
**SMOKE SHARK II**  
SMOKE AND PARTICLE  
REMOVAL



**BOVIE**  
**1250S SPECIALIST PRO**  
HIGH FREQUENCY  
ELECTROSURGICAL GENERATOR

CRYOSUCCESS  
LIQUIDFREEZING

**CRYOSUCCESS**  
**LIQUID FREEZING**  
CRYOGENIC  
SURGICAL DEVICE



# X-RAY PROTECTION & ACCESSORIES



**UXR**  
**THYROID SHIELD**



**UXR**  
**OPEN PALM MITTS**



**UXR**  
**ADJUSTABLE APRON**



**UXR**  
**ADJUSTABLE APRON WITH**  
**INTEGRATED THYROID SHIELD**  
**(SEWN-ON)**



**UXR**  
**FOAM V-TROUGH**  
**POSITIONING SET**

# REHABILITATION



ZOMEDICA®



## LOOP ASSISI

At Home Or In-Clinic Use

- Accelerate healing
- Decrease pain and inflammation
- Decrease or eliminate the need for pharmaceuticals and opioids



## DENTALOOP ASSISI

Smile! DentalLOOP Is Here!

- Helps reduce oral and dental pain and inflammation



## PULSEVET ZOMEDICA

Shock Wave Therapy System

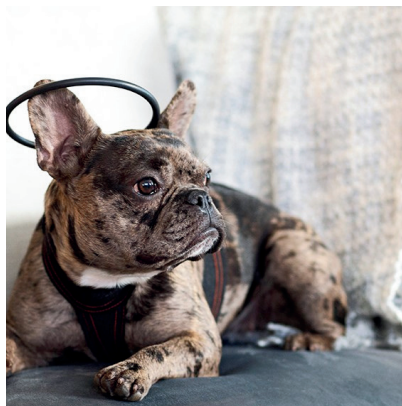
- Small, fast, powerful, and clinically proven
- The #1 shock wave therapy in regenerative veterinary medicine



## LOOP LOUNGE ASSISI

Total Body Treatment For Dogs And Cats

- Three pad sizes
- Removable waterproof washable liner
- Rechargeable system designed to deliver 6,000 nose to tail tPEMF treatments



## CALMER CANINE ASSISI

A Drug-Free Solution To Canine Separation Anxiety

- Significantly reduces the signs of CSA
- Improves the quality of life
- Long-lasting results
- May also help with other anxieties



## UNDERWATER TREADMILL HYDRO PHYSIO

Physiotherapy For Dogs

- Exceptional build quality
- Practitioner-friendly features
- Excellent safety and accessibility





# BRACES



**YOUR PET'S  
PATH TO RECOVERY  
STARTS HERE**



**BALTO JUMP**  
KNEE  
BRACE



**BALTO LIGATEK**  
ADJUSTABLE HINGED  
KNEE BRACE



**BALTO HOCK**  
HOCK  
BRACE



**BALTO FLEXOR**  
ADJUSTABLE HOCK  
BRACE



**BALTO SPLINT**  
CARPAL/TARSAL  
LAXITY SPLINT



**BALTO BONE**  
FRACTURE  
BRACE



**BALTO PULL**  
BRACE FOR HYPERFLEXION  
PHALANGES



**BALTO SOFT**  
ELBOW  
BRACE



**BALTO SOFT PLUS**  
DOUBLE ELBOW  
BRACE



**BALTO LUX**  
SHOULDER  
BRACE



**BALTO JOINT**  
CARPAL  
COMPRESSION BAND



**BALTO NECK**  
RIGID  
NECK BRACE



**BALTO NECK ECO**  
E-COLLAR  
ALTERNATIVE



**BALTO LIFE**  
HIP DYSPLASIA  
BRACE



**BALTO BODY LIFT**  
BODY HARNESS  
WITH HANDLES



**BALTO UP**  
REAR HARNESS  
SUPPORT



**BALTO LINK**  
REAR LEGS  
CONTROL



**BALTO HOCK CAT**  
HOCK BRACE FOR  
FELINES



**BALTO SPLINT CAT**  
CARPAL/METATARSAL  
LAXITY SPLINT FOR FELINES



**BALTO NECK ECO CAT**  
E-COLLAR ALTERNATIVE  
FOR FELINES



**BALTO NECK CAT**  
RIGID NECK BRACE  
FOR FELINES



**BALTO BONE CAT**  
FRACTURE BRACE  
FOR FELINES



**BALTO PULL CAT**  
CARPAL HYPERFLEXION  
BRACE FOR FELINES



# TUBS, TABLES & SCALES



FULL  
MIDMARK  
PRODUCT  
PORTFOLIO  
available

PLEASE CONTACT UXR  
FOR MORE INFORMATION



**MIDMARK**  
**FOLD-DOWN**  
**WALL MOUNT**  
COMPACT EXAM TABLE

**MIDMARK**  
**FOLD-UP**  
**WALL MOUNT**  
EXAM TABLE



**MIDMARK**  
**DRY TREATMENT**  
**TABLE**  
FIXED HEIGHT DRY  
PREP TABLE



**MIDMARK**  
**WET TREATMENT**  
**TABLE**  
CUSTOMIZABLE  
CONFIGURATIONS



**MIDMARK**  
**FLAT-TOP**  
DENTAL/SURGERY TABLE  
ADJUSTABLE HYDRAULIC



**MIDMARK**  
**V-TOP**  
SURGERY TABLE  
ADJUSTABLE HYDRAULIC



**MIDMARK**  
**MOBILE ELECTRIC LIFT TABLE**  
MULTI-PURPOSE  
TABLE



**BRECKNELL**  
**PS500**  
SCALE



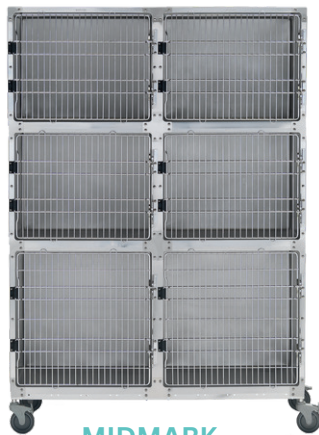
**BRECKNELL**  
**MS-15**  
SCALE

# CAGES & CONTAINMENT

Custom  
solutions  
configured to  
your exact  
needs!



**MIDMARK**  
STAINLESS STEEL  
CAGES



**MIDMARK**  
STAINLESS STEEL  
CAGE ASSEMBLIES



**MIDMARK**  
GLASS BACK  
CAGES



**MIDMARK**  
STAINLESS STEEL  
SINGLE KENNELS

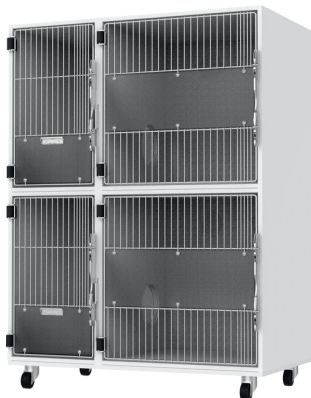


**MIDMARK**  
FRONT-TO-BACK  
KENNEL



Minimize fear,  
anxiety and stress  
for your furry  
guests

**MIDMARK**  
CANINE QUIET  
COTTAGES



**MIDMARK**  
STAINLESS STEEL  
CAT SUITES



**MIDMARK**  
FELINE COMFORT  
SUITES



UNIQUE  
VIEWING DOME

**MIDMARK**  
CAT PLAY  
AND SLEEP

# CLINICAL-GRADE CABINETRY

LET US HELP YOU CREATE AN INVITING SPACE BUILT TO LAST



## BUILT TO LAST

Midmark Synthesis® cabinetry is designed specifically for the rigors of the veterinary environment. Crafted using durable materials, assembly and finishes, these cabinets can withstand moisture, stringent cleaning and constant use for decades of usability with a lasting like-new appearance to maximize your investment.

## DESIGNED FOR BETTER CARE

Asepsis-friendly surfaces and design features like rounded interior drawer corners, seamless panels and antimicrobial handle options support infection prevention. The variety of layout, organization and finish options can enhance your unique style while improving clinical workflow and ergonomics for a better point of care experience.

## QUALITY YOU CAN TRUST

Invest confidently knowing Midmark has your back. As of January 1, 2025, all Midmark cabinetry comes with a 10-year limited warranty—one of the longest veterinary cabinetry warranties on the market.







CORE IMAGING

bionet



burton®



AOHUA



Bovie®

IM3® THE GLOBAL NAME IN VETERINARY DENTISTRY



StatSpin



Leading Veterinary Imaging  
& Equipment Solutions  
Provider in Canada  
SINCE 1949

514-695-4114  
1-877-440-4494  
info@uxr.ca  
UXR.ca