

CELEBRATING
20+
YEARS

V9
CATALOGUE

CELEBRATING
20+
YEARS

V9
CATALOGUE



SABLE
INDUSTRIES INC.
ISO 13485:2016 CERTIFIED • HEALTH CANADA REGISTERED

Sable Head Office

100 Campbell Avenue, Suite 5,
Kitchener, Ontario, N2H 4X8 CANADA

Tel: 519-579-9323 or 1-800-368-8106

Fax: 519-579-9324

Email: info@sableindustriesinc.com

Sable USA

31575 Glendale, Livonia, MI 48150
1-800-368-8106



WWW.SABLEINDUSTRIESINC.COM

PRINTED IN CANADA LIT-0201-2019A



SABLE
INDUSTRIES INC.
ISO 13485:2016 CERTIFIED • HEALTH CANADA REGISTERED



WWW.SABLEINDUSTRIESINC.COM

EQUIPMENT

High Speed Handpieces and Couplers	1-2
Sable NSK & STAR Cross Reference Chart	3
Slow Speed Handpieces & Components	4-7
MIDWEST Type Slow Speed Components	8
U-Type Prophy Heads & Contra Angles	9
Sable KAVO & MIDWEST Cross Reference Chart	10
KAVO Type Premium Slow Speed Handpieces	11
Handpiece Repair Tools and Parts	12
Statim Compressors	12
Autoscaler & Parts	13

BIO-PURE EVACUATION SYSTEM CLEANER

14-15

HANDPIECE REPLACEMENT PARTS

Sable 1:5 Electric Handpiece Parts	16-17
High Speed Replacement Turbines, Balanced Autochuck Spindle/Impeller Combos, Autochuck Spindles, Push Button Turbine Conversion Kits	18-27
Bearing Table (Steel and Ceramic)	28
NSK & OEM Canister Chuck Type Turbines	29
NSK & OEM Canister PB Type Turbines	29-30
NSK Type Economy Canister Turbines	31-33
NSK & OEM Back Caps	33
Handpiece Replacement Bulbs	34
LED Fiber Optic Handpiece Replacement Bulbs	35
Fiber Optic Light Control Set / New Transformer	36
ISO Fiber Optic, EURO, ADEC Handpiece Tubing	37
Buck & Boost Transformers	38-39
Product Warranty List	40
Product Returns, Pricing, Conditions, Terms	41

The Following are registered trademarks of the indicated companies:
A-dec - A-dec Inc., Bien Air - Bien Air Dental SA, Kavo Kaltenbach & Voight GmbH & Co., Sirona - Sirona Dental System GmbH, W&H - W&H Dentalwerk Burmoose Inc., NSK - NSK Nakanishi Inc., Star - Dental EZ Group, DENTSPLY International Inc (Midwest, Cavitron, RDH, Bobcat, SPS), Mk-Dent - MK-Dent GmbH, Faro - Faro S.p.A., Statim 2000 - SciCan Ltd., Whaledent - Coltene/Whaledent Inc., Hu-Friedy- Hu Friedy Mfg. Co., LLC, Premier- Premier Products Co., Impact Air - Palisades Dental, LLC, Siemens - Siemens AG, Vector - Vector Research and Development Inc., Safco - Safco Dental Supply Inc., Dabi Atlante Industrias S/A, Pelton & Crane - Pelton & Crane. Sable Industries Inc. is in no way affiliated with the above companies.

SABLE PRO SERIES HANDPIECES

- 2 year warranty
- New teardrop design head for greater visibility.
- Quadruple Water Spray increasing cooling efficiency
- New turbine design and turbine suspension for quieter operation and maximum longevity
- New back cap design to remove exhaust air more efficiently
- Titanium finish
- Interchangeable with KAVO™(KL) or NSK™ Type (NL)

- ACCESS™ PRO-NL Mini Head 2000017
- ROTAMAX™ PRO-NL Torque Head 2000018
- ACCESS™ PRO-KL Mini Head 2000019
- ROTAMAX™ PRO-KL Torque Head 2000020

Refer to page 2
for Compatible
Couplers



NON-FIBER OPTIC HIGH SPEED HANDPIECES

- SABLE ACCESS™ II 2000003
PB Miniature Head without coupler
12 Month Warranty

- SABLE ROTAMAX™ II 2000004
PB Torque Head without coupler
12 Month Warranty

- 4 HOLE / 360°/ 2000101
Quick Connect Coupler



4 Hole / 360° / KAVO MULTIflex Type Coupler
2000114



KAVO MODEL# 457 OEM P/N: 553-1210

5 Hole / 360° / KAVO MULTIflex Type Coupler
2000105



KAVO MODEL#1390 P/N 0553.1390

6 Hole / 360° / KAVO MULTIflex LUX Type Coupler
2000116



KAVO MODEL# 465LRN P/N: 1001.7599

6 Hole / 360° / KAVO MULTIflex LUX Type LED Coupler
2000119



KAVO MODEL# 460LED P/N: 1007.3201

4 HOLE / 360° / Quick Connect Coupler
2000101



2 HOLE / 360° / Quick Connect Coupler
2000102



6 Hole NSK Type NL400 Fiber Optic Coupler
2000107



NSK MODEL# PTL-CL-4HV

6 Hole NSK Type NL400 LED Fiber Optic Coupler
2000108



NSK Type *Custom Options Available -

Please Specify;

- 6 Hole NSK Type NL400 FIBER OPTIC Coupler 2000107
- 4 Hole NSK Type NL400 Non -Optic Coupler Specify Custom 4 hole
- 6 Hole NSK Type NL400 LED Coupler 2000108

WARRANTY: All SABLE Couplers carry a 1-Year Warranty from date of Installation.

PRODUCT DESCRIPTION

SABLE
PART #

NSK
PART #

DOCTORS PACKAGE

20K 4-Hole Air Motor, 1:1 Straight Nosecone, 1:1 Contra Angle, Standard Swing Latch Head	1600008	EX-203 Y100-104 SET
20K Air Motor, 1:1 Nosecone, 1:1 Contra Angle, Standard Latch Head	1600009	EX-203 Y100-104 SET

AIR MOTORS – 4 HOLE, ISO E-TYPE

Accept all brands of ISO E-type Attachments

20K Air Motor	1600110	EX-203 M138
5K Air Motor	1600102	EX-103 M147

ATTACHMENTS

1:1 Contra Angle (Blue Band)	1600210	EC C100
4:1 Contra Angle (Green Band)	1600202	E-4R C220
16:1 Contra Angle	1600203	E-16R C219
1:1 Straight Nosecone	1600310	EX-6 M116
4:1 Straight Nosecone	1600303	EX-5 M115

HEADS - ISO E-TYPE, 12 TOOTH (NSK)

Snap-on Sealed Prophy Head	1600401	AR-YK C188
Screw-in Sealed Prophy Head	1600402	AR-YS C187
Standard Latch Head	1600403	NAC-Y C032
Ball Bearing Latch Head	1600407	BB-YL C035
Miniature Latch Head	1600405	NM-Y C247
Push Button Ball Bearing Latch Head	1600421	FPB-Y C873 NPB-Y C808

HIGH SPEED

Access PRO- NL Mini Head	2000017	X600L & Z800L
Rotamax PRO-NL Toque Head	2000018	X700L & Z900L

SABLE / STAR CROSS REFERENCE CHART

PRODUCT DESCRIPTION

SABLE
PART #

NSK
PART #

Star Titan 5 Star Snap-On Head	1600408	n/a
Star Titan 5 Star Screw-In Head	1600409	263176
Star Titan Standard Latch Head	1600406	n/a
Star Titan Ball Bearing Latch Head	1600410	259005

SLOW SPEED HANDPIECES

DOCTOR'S PACKAGES

Standard Swing Latch Head Sable NSK Style 1600008

NSK MODEL# EX-203 Y100-104 SET 1600403 Standard Swing Latch Head
1600210 EC Type 1:1 Contra Angle
1600310 EX-6 Type 1:1 Straight Nosecone
1600110 EX-203 Type 20K 4-Hole Air Motor



Push Button BB Latch Head Sable NSK Style 1600009

1600421 Push Button BB Latch Head
1600210 EC Type 1:1 Contra Angle
1600310 EX-6 Type 1:1 Straight Nosecone
1600110 EX-203 Type 20K 4-Hole Air Motor



Push Button BB Latch Head Sable KaVo Style 1600010

*with Internal Air & Water 1610810 KAVO Type 1:1 Ball Bearing PB Latch Head
1610210* 1:1 Contra Angle
1610310* 1:1 Straight Nosecone
1610110* IS-205 Type 20K 4-Hole Motor



HYGIENIST PROPHY PACKAGES

Hygienist Package #1 - Snap-On E-Type 1600011

1600110 20K Air Motor, 1600202 4:1 Reduction Contra Angle,
1600401 Snap-on Sealed Prophylaxis Head



Hygienist Package #2 - Screw-In E-Type 1600012

1600110 20K Air Motor, 1600202 4:1 Reduction Contra Angle,
1600402 Screw-in Sealed Prophylaxis Head



Hygienist Package #3 - Standard Latch E-Type 1600013

1600110 20K Air Motor, 1600202 4:1 Reduction Contra Angle,
1600403 Standard Latch Head



Hygienist Package #4 - Ball Bearing Swing Latch E-Type 1600014

1600110 20K Air Motor, 1600202 4:1 Reduction Contra Angle,
1600407 Ball Bearing Swing Latch Head



SLOW SPEED HANDPIECES

Doctor's E-Type Package

1600016

1600110 20K Air Motor
1600211 1:1 Ball Bearing Auto Latch Contra Angle
1600310 1:1 Nosecone



Hygienist Package - Ball Bearing Swing Latch E-Type

1600018

1600110 20K Air Motor
1600212 4:1 Screw-In Contra Angle



ACCESS™ PROPHY CLEAN

Hygienist Propyl Handpiece

High torque. 360° Swivel nosecone. Accepts all hygienist disposable and metal prophylaxis angles.

Friction grip style chuck.

Weights 2.8 oz.

Fully autoclavable.

1600005



AIR MOTORS - 4 Holes, ISO E-Type.

Accepts all brands of ISO E-Type attachments.

20K Air Motor NSK MODEL# EX-203 M138

1600110



5K Air Motor NSK MODEL# EX-103 M147

1600102



NOSECONES

1:1 Straight Nosecone NSK MODEL# EX-6 M116

1600310



4:1 Straight Reduction Nosecone NSK MODEL# EX-5 M115

1600303



SLOW SPEED HANDPIECES

ATTACHMENTS - ISO E-Type 12 Tooth NSK Type, Couple to all brands of ISO E-Type motors.

1:1 Contra Angle NSK MODEL# EC C100
1600210



4:1 Reduction Contra Angle NSK MODEL# E-4R C220
1600202



E-TYPE 1:1 Auto Latch Contra Angle
One Piece Design
1600211



E-TYPE 4:1 Screw-in / Snap-in Contra Angle
One Piece Design
1600212
1604003 Prophy Button
included to convert to a
snap-on head



HEADS - ISO E-Type 12 Tooth (SABLE NSK & STAR TYPE)

Snap-On Prophy Head
5,000 RPM
1600401
NSK MODEL# AR-YK C188



Screw-In Prophy Head
5,000 RPM
1600402
NSK MODEL# AR-YS C187



Standard Swing Latch Head
5,000 RPM
1600403
NSK MODEL# NAC-Y C032



Ball Bearing Swing Latch Head
40,000 RPM
1600407
NSK MODEL# BB-YL C035



SLOW SPEED HANDPIECES

Miniature Latch Head
5,000 RPM
1600405
NSK MODEL# NM-Y C247



Ball Bearing Push Latch Head
40,000 RPM
1600404



Ball Bearing Push Button Latch Head
40,000 RPM
1600421
NSK MODEL# FPB-Y C873
NPB-Y C808



STAR TYPE HEADS W/ ELBOW

STAR Type Ball Bearing Push Button Latch Head W/ Elbow
20,000 RPM
1600412*
(*1600421 with Elbow)



STAR Type Standard Latch W/ Elbow
5,000 RPM
1600406



STAR Type Snap-On Prophy Head W/ Elbow
5,000 RPM
1600408



STAR Type Screw-In Prophy Head W/ Elbow
5,000 RPM
1600409
STAR MODEL# 263176



STAR Type Ball Bearing Swing Latch Head W/ Elbow
20,000 RPM
1600410
STAR MODEL# 259005



STAR Type 12-Tooth Elbow Only
1604004



MIDWEST TYPE SLOW SPEED COMPONENTS

1:1 MIDWEST Shorty & Rhino Type Contra Angle
1600204



MIDWEST MODEL# 710074

1:1 MIDWEST Shorty & Rhino Type Nosecone
1600302



MIDWEST MODEL# 720005

MIDWEST Type 14 Tooth Snap-On Prophy Head
1600501



MIDWEST Type 14 Tooth Screw-In Prophy Head
1600502



MIDWEST Type 14 Tooth Standard Latch Head
1600503



NEW
MIDWEST Type 14 Tooth Ball Bearing Push Button Latch Head
1600504



MIDWEST Type 14 Tooth Ball Bearing Swing Latch Head
1600507



MIDWEST MODEL# 720406

WARRANTY: 6 Months on Attachments, 3 Months on Heads.

U-TYPE PROPHY HEADS & CONTRA ANGLES

PROPHY HEADS

U-Type Snap-On Prophy Head, 5,000 RPM
1300103



U-Type Screw-In Prophy Head, 5,000 RPM
1300104

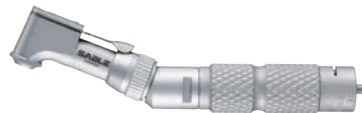


CONTRA ANGLES W/ HEAD

U-Type Standard Latch, 5,000 RPM Non-Sectional
1300301



U-Type Standard Latch, 5,000 RPM Sectional
1300302



U-Type Ball Bearing Push Latch, 20,000 RPM Sectional
1300303



U-Type Friction Grip W/ Bur Tool, 20,000 RPM Sectional
1300304



WARRANTY: 6 Months on Contra Angles, 3 Months on Heads.

SABLE / KAVO CROSS REFERENCE CHART

Product Description	Sable Part #	Interchangeable All Features	Interchangeable Most Features
---------------------	--------------	------------------------------	-------------------------------

SLOW SPEED

25K Air Motor w/ Internal Air & Water Non-Fiber Optic	1610110	KAVO 181H OEM P/N: 535-5200	
1:1 Contra Angle w/ Internal Air & Water Non-Fiber Optic	1610210	KAVO 20C OEM P/N: 534-5220	KAVO 20, 20A, 20B, 20CH, 20CHC, 20CN
1:1 Nosecone w/ Internal Air & Water Non-Fiber Optic	1610310	KAVO 10C OEM P/N: 524-1070	KAVO 10, 10A, 10B, 10CH, 10CN, 10CNC
1:1 Ball Bearing Push Button Latch Head	1610810	KAVO 68LH OEM P/N: 540-2040	68LDN/68LU
1:1 Screw-In Propy Head	1610820	KAVO 31LR OEM P/N: 549-338	

HIGH SPEED

Access PRO-KL Mini Head	2000019	4500	642, 635, 645, 4500B, 4500BR, 8700
Rotamax PRO-KL Torque Head	2000020	6500	640, 647, 649, 659, 6500, 6500BR, 8900
KAVO type MULTIflex LUX Coupler (Fiber Optic)	2000116	465LRN OEM P/N: 553-1550	
KAVO type MULTIflex Coupler (Non-Fiber Optic)	2000114	457 OEM P/N: 553-1210	
KAVO type MULTIflex LED Coupler	2000119		
KAVO type Bulb (3-Pack)	1000802	OEM P/N: 553-3881	

FIBER OPTIC SYSTEMS

Light Control Set (7' Tubing)	2300001		
Light Control Set (10' Tubing)	2300002		
Light Control Board	2300101	OEM P/N: 905-8400	
Transformer	2300203		
6 Hole 7' Grey F/O Tubing	2100103	OEM P/N: KL035009	
6 Hole 10' Grey F/O Tubing	2100105	OEM P/N: KL035010	
6 Hole 7' Surf F/O Tubing	2100104		
6 Hole 10' Surf F/O Tubing	2100106		
6 Hole 7' Sterling F/O Tubing	2100108		
6 Hole 10' Sterling F/O Tubing	2100109		
6 Hole 7' Dark Surf ADEC Type Tubing	2100110		
6 Hole 10' Dark Surf ADEC Type Tubing	2100111		

SABLE / MIDWEST CROSS REFERENCE CHART

Product Description	SABLE PART #	MIDWEST PART #
Sable MIDWEST Rhino/Shorty 1:1 Type Contra Angle	1600204	710074
Sable MIDWEST Rhino/Shorty 1:1 Nosecone	1600302	720005
Sable MIDWEST Standard Latch Head	1600503	n/a
Sable MIDWEST BB Push Latch Head	1600504	n/a
Sable MIDWEST BB Swing Latch Head	1600507	720406

KAVO TYPE PREMIUM SLOW SPEED HANDPIECES

AIR MOTORS - ISO E-TYPE. Couple to all brands of ISO E-Type attachments (with or without air & water).

20K Air Motor W/ Internal Air & Water 20,000 Rpm. Accepts All ISO E-Type Attachments
1610110

KAVO MODEL#
KAVO 181H OEM P/N: 535-5200



ATTACHMENTS - ISO E-TYPE. Couple to all brands of ISO E-Type air or electric motors (with or without air & water).

1:1 Ball Bearing Contra Angle W/ Internal Air & Water 40,000 RPM Accepts All KAVO & Sable Premium Type Heads
1610210

KAVO MODEL#
KAVO 20C OEM P/N: 534-5220



1:1 Ball Bearing Straight Nosecone W/ Internal Air & Water 40,000 RPM
1610310

KAVO MODEL#
KAVO 10C OEM P/N: 524-1070



HEADS - Attach to SABLE and KAVO Contra Angles.

Ball Bearing 1:1 Push Button Latch Head
1610810

KAVO MODEL#
KAVO 68LH OEM P/N: 540-2040



1:1 Screw-In Propy Head
Maximum Speed 5,000 RPM
(Available only in Canada)
1610820



WARRANTY: 1 Year on all KAVO Type Premium Handpieces.

SABLE ROTAMAX™ ACCESS™ I & II Lubricating Nozzle		2001220
Lubrication Nozzle (KAVO Type Contra-Angles & Heads)		1611201
KAVO MULITflex Lubricating Nozzle		2001228
NSK Lubricating Nozzle		2001227
NSK Coupler O-Ring Set		2001232
KAVO MULITflex Coupler O-Ring Set		2001231
Coupler O-Ring Set For 2000101 & 2000102		2001217
Coupler O-Ring For 1600363 (Complete Set)		2001223
E-Type Motor O-Ring 3 pack		2001233
Coupler Rear Gasket (4-Hole)		2001218
6-Hole Coupler Rear Gasket		2001224
Coupler Attachment Tool		2001219
SABLE ACCESS™ I & II Cap Key		2001215
SABLE ROTAMAX™ I & II Cap Key		2001216
SABLE ACCESS™ S4500KL / ROTAMAX™ S6500KL Type Cap Key		2001234
Clean Out Wire		2001230

STATIM COMPRESSORS

Compressor
Statim 2000
OEM code 01-100560S
Pelton & Crane Delta 8, 10
1700101



Compressor Filter
Statim 2000
OEM code 01-100207S
Pelton & Crane Delta 8, 10
(Pkg. of 10)
1700201



Autoscaler 30K
1900001

Autoscaler 25K
1900002



Please see page 9 for our complete listing of U-Type Contra Angles and Prophy Heads.
• Rated EXCELLENT by a leading research institute.
• Accepts SABLE, Hu-Freidy, Whaledent, Premier, and Dentsply/Cavitron brand tips.
• Includes a detachable handpiece assembly for ease of service.
Extended 6 year warranty on circuitry.

AUTOSCALERS REPLACEMENT PARTS

Replacement Handpiece 25K/30K Units w/serial's 9676-current
1900102

Solenoid & Regulator 25K/30K Units w/serial's 11732-current
1900202

Foot Control for Autoscaler Black (All Units)
1900405

ULTRASONIC SCALING TIPS

30,000 Hz Ultrasonic Insert #3 - Beavertail
1900601



25,000 Hz Ultrasonic Insert #3 - Beavertail
1900602



30,000 Hz Ultrasonic Insert #10 - Universal
1900603



25,000 Hz Ultrasonic Insert #10 - Universal
1900604



BIO-PURE®

Science That Works!

For eVac Maintenance or Between Patient Flush

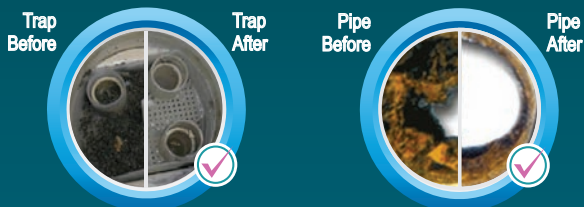
Guaranteed To Improve Suction Performance!



EPA Amalgam Rule Compliant

Free: electronic record keeping software:
www.dds-epa.org (USA only)

- Cleans 24/7 - 1 Microbe becomes 10,000,000 in 24 hours
- Eliminates trap hand cleaning
- All natural & non-foaming
- Easy to use
- **48 oz. = 533 treatments**



BIO-PURE EVAC CLEANER STARTER KITS

Includes: Maintenance Jar, and HVE-SE Dispenser.

Restore 6 oz. Kit case of 6 (67 Treatments) **2801101**

BIO-PURE EVAC SYSTEM CLEANER

Maintenance Cleaner 6 oz. case of 12 (67 Treatments) **2801001**

Maintenance Cleaner 14 oz. case of 12 (156 Treatments) **2801002**

Maintenance Cleaner 48 oz. case of 6 (533 Treatments) **2801003**

Bio-Pure eVac System Dispenser case of 6 **2801004**

NEW BIO-PURE - LIQUID EVAC CLEANER (LSF)

Bio-Pure Liquid eVac Cleaner 32oz. (128 Treatments) **2801402**

Bio-Pure Liquid eVac Cleaner Starter Kit (128 Treatments) **2801405**
(2801405 Includes; 2801402 32 oz.
Cleaner & 2801004 48oz. Dispenser)

NEW BIO-PURE - BETWEEN PATIENT FLUSH (BPF)

Bio-Pure Between Patient Flush 32oz. (64 Treatments) **2801202**

Bio-Pure Between Patient Flush 64oz. (128 Treatments) **2801203**

Bio-Pure Between Patient Flush Starter Kit (64 Treatments) **2801206**
(2801206 Includes; 2801202 32 oz.
Cleaner & 2801004 48oz. Dispenser)

SABLE 1:5 ELECTRIC HANDPIECE PARTS

KAVO 25LHA

KAVO Type 25LHA Gear Insert Cartridge

1608051

OEM Part # 0.553.7341



KAVO Type 25LHA Intermediate Shaft

1608055

OEM Part # 0.553.7201



KAVO Type 25LHA
Cartridge & Shaft Kit

1608056

OEM Part # 0.553.7341 + 0.553.7201



KAVO Type 25LHA
Cartridge, Shaft & Idler Gear Kit

1608057

OEM Part # 0.553.7341 +
0.553.7201 + 0.553.7251



KAVO Type 25LHA

5-Pack Front Gear Intermediate Shaft

1608059

KAVO Type 25LHA

5-Pack Rear Gear Intermediate Shaft

1608060

KAVO LPA/LPR

KAVO Type 25LPA/LPR Gear Insert Cartridge

1608052

OEM Part # 1.001.3520



KAVO Type 25LPA/LPR
Intermediate Shaft

1608053

OEM Part # 1.001.3515



KAVO Type 25LPA/LPR
Cartridge & Shaft Kit

1608054

OEM Part # 1.0002.6135 + 1.001.3515



KAVO Type 25LPA/LPR
Cartridge, Shaft & Idler Gear Kit

1608058

OEM Part # 1.0002.6135 +
1.001.3515 + 1.001.3519 or 1.006.2965



KAVO Type 25LPA/LPR Idler Shaft

1608064

WARRANTY: 1 Year.

SABLE 1:5 ELECTRIC HANDPIECE PARTS

KAVO Type 25LPA/LPR

5-Pack Front Gear Intermediate Shaft

1608065

KAVO Type 25LPA/LPR

5-Pack Rear Gear Intermediate Shaft

1608066

KAVO Type 25LPA/LPR

Gear Insert Cart. + Front Gear Int. Shaft

1608067

KAVO Type E25L

Intermediate Shaft (OEM)

1608072



KAVO Type E25L

Gear Insert Cartridge + Intermediate Shaft (OEM)

1608073



KAVO Type E25L

Gear Insert Cartridge

1608077



MIDWEST E-Stylus OEM N/A, SCICAN TYPE STATIS 1:5L

Gear insert Cartridge

1602050

OEM Part # 1500125



SIRONA Type C/S/A200L

Gear insert Cartridge

1609050

OEM Part # 61 75 587/64 05 687

NSK ELECTRIC PARTS

NSK Type Ti-Max X95L

Gear Insert Cartridge

1604050



NSK Type Ti-Max X95L

Intermediate Shaft (OEM)

1604051



NSK Type Ti-Max X95L

Gear Insert Cartridge + Int. Shaft (OEM)

1604052



For product availability, call or view our most current online catalogue.

REPLACEMENT TURBINES BY BRAND

REPLACEMENT TURBINES BY BRAND

BIEN AIR BLACK PEARL



Type	
Turbine Steel	1000107
Spindle/Impeller	1000507
Spindle	1000207
Steel Bearing	1000612M
O-Ring(s)	1000917
Back Cap	1000407

BIEN AIR ONDINE



Type	
Turbine Steel	1000120
Spindle/Impeller	1000520
Spindle	1000224
Steel Bearing	1000611M
Ceramic Bearing	1000697M
O-Ring(s)	1000915
Back Cap	1000420

BIEN AIR BORA



Type	
Turbine Steel	1000121
Spindle/Impeller	1000521
Spindle	1000207
Steel Bearing	1000612M
O-Ring(s)	1000917
Back Cap	1000421

J. Morita TWINPOWER 4-Hex & 45 Head Type



Turbine Steel	1000196
Spindle/Impeller	1000585
Ceramic Bearing	1000698M
O Ring	1000906
Spring Washer	1001223

Note: Canister lid, Canister and External O - Rings must be re-used

KAVO 632, 633, 639, 642, 643B, 645 Type



Turbine Steel	1000101
Ceramic	1000137
Conversion Kit	1001101
Rebuild Kit	1000701
Spindle/Impeller	1000501
Spindle	1000201
Steel Bearing	1000601M
Ceramic Bearing	1000699M
O-Ring(s)	1000921
Back Cap	1000401
Back Cap (643B & 645)	1000423
Cap Tool	1001205

KAVO 625C 630/40 Type



Turbine Steel	1000102
Ceramic	1000138
Conversion Kit Steel	1001102
Ceramic	1001103
Rebuild Kit	1000701
Spindle/Impeller	1000502
Spindle	1000202
Steel Bearing	1000601M
Ceramic Bearing	1000699M
O-Ring(s)	1000921
Back Cap	1000402-640
	1000403-625/630
Cap Tool	1001205

KAVO 635B Type



Turbine Steel	1000115
Ceramic	1000139
Rebuild Kit	1000715
Spindle/Impeller	1000517
Spindle	1000217
Steel Bearing	1000601M (Front)
	1000613M (Rear)
Ceramic Bearing	1000699M (Front)
	1000695M (Rear)
O-Ring(s)	1000921
Air Dam	1001211
Back Cap	1000415
Cap Tool	1001217

KAVO 650 Type



Turbine Steel	1000116
Ceramic	1000117
Rebuild Kit	1000701
Spindle/Impeller	1000516
Spindle	1000218
Steel Bearing	1000601M
Ceramic Bearing	1000699M
O-Ring(s)	1000921
Air Dam	1001213
Back Cap	1000422
Cap Tool	1001214

KAVO 635BR Type



Turbine Ceramic	1000188
Spindle/Impeller	1000517
Spindle	1000217
Ceramic Bearing	1000699M (Front)
	1000695M (Rear)
O-Ring(s)	1000921
Air Dam	1001219
Back Cap	1000415
Cap Tool	1001217

KAVO 6500BR Type



Turbine Ceramic	1000189
Spindle/Impeller	1000563
Spindle	1000234
Ceramic Bearing	1000697M (Front)
	1000698M (Rear)
O-Ring(s)	1000921
Air Dam	1001236
Spring Washer(s)	1001223
Back Cap	1000442
Cap Tool	1001214

KAVO 647B, 649B Type



Turbine Steel	1000122
Ceramic	1000140
Rebuild Kit	1000701
Spindle/Impeller	1000522
Spindle	1000219
Steel Bearing	1000601M
Ceramic Bearing	1000699M
O-Ring(s)	1000921
Air Dam	1001212
Back Cap	1000422
Cap Tool	1001214

KAVO 6000 Type



Turbine Steel	1000125
Ceramic	1000161
Rebuild Kit	1000733
Spindle/Impeller	1000531
Spindle	1000231
Steel Bearing	1000608M (Front)
	1000605M (Rear)
Ceramic Bearing	1000693M (Front)
	1000698M (Rear)
O-Ring(s)	1000921
Spring Washer	1001223
	1001224
Back Cap	1000425
Cap Tool	1001214

KAVO 655, 660B Type



Turbine Steel	1000131
Ceramic	1000132
Rebuild Kit Ceramic	1000760
Spindle/Impeller	1000533
Spindle	1000232
Steel Bearing	1000611M
Ceramic Bearing	1000697M
O-Ring(s)	1000921
Spring Washer(s)	1001223
Back Cap	1000425
Cap Tool	1001214

KAVO 634 Type



Turbine Steel	1000160
Ceramic	1000141
Rebuild Kit	1000701
Spindle/Impeller	1000501
Spindle	1000201
Steel Bearing	1000601M
Ceramic Bearing	1000699M
O-Ring(s)	1000921
Back Cap	1000401
Cap Tool	1001205

REPLACEMENT TURBINES BY BRAND

REPLACEMENT TURBINES BY BRAND

KAVO 6500B Type

Turbine Steel	1000173
Ceramic	1000178
Rebuild Kit Steel	1000735
Ceramic	1000738
Spindle/Impeller	1000563
Spindle	1000234
Steel Bearing	1000608M (Front)
	1000605M (Rear)
Ceramic Bearing	1000693M (Front)
	1000698M (Rear)
O-Ring(s)	1000921
Air Dam	1001236
Spring Washer	1001223 (Front)
	1001224 (Rear)
Back Cap	1000442
Cap Tool	1001214



KAVO 625CD 636, 646 Type

Turbine Steel	1000174
Ceramic	1000179
Rebuild Kit Steel	1000701
Ceramic	1000739
Spindle/Impeller	1000564
Spindle	1000235
Steel Bearing	1000601M
Ceramic Bearing	1000699M
O-Ring(s)	1000921
Back Cap	1000443
Cap Tool	1001214



KAVO 659B, 659BR Type

Turbine Steel	1000175
Ceramic	1000170
Rebuild Kit Steel	1000736
Ceramic	1000731
Spindle/Impeller	1000561
Spindle	1000236
Steel Bearing	1000613M (Front)
	1000617M (Rear)
Ceramic Bearing	1000695M (Front)
	1000690M (Rear)
O-Ring(s)	1000921
Spring Washer(s)	1001223
Back Cap	1000440
Cap Tool	1001214



KAVO 7000 Type

Turbine Ceramic	1000126
Rebuild Kit Ceramic	1000762
Spindle/Impeller	1000532
Spindle	1000233
Steel Bearing	1000605M
Ceramic Bearing	1000698M
O-Ring(s)	1000921
Spring Washer(s)	1001223
Back Cap	1000425
Cap Tool	1001214



KAVO 637B Ceramic Type

Turbine Ceramic	1000165
Rebuild Kit Ceramic	1000761
Spindle/Impeller	1000517
Spindle	1000217
Steel Bearing	1000601M (Front)
	1000613M (Rear)
Ceramic Bearing	1000699M (Front)
	1000695M (Rear)
O-Ring(s)	1000921
Air Dam	1001219
Back Cap	1000415
Cap Tool	1001217



KAVO 8000 Ceramic Type

Turbine Ceramic	1000166
Rebuild Kit Ceramic	1000763
Spindle/Impeller	1000563
Steel Bearing	1000611M (Front)
	1000605M (Rear)
Ceramic Bearing	1000697M (Front)
	1000698M (Rear)
O-Ring(s)	1000921
Spring Washer(s)	1001223
Back Cap	1000442
Cap Tool	1001214



KAVO 4500B/BR, M4500L Ceramic Type

Turbine Ceramic	1000171
Rebuild Kit Ceramic	1000732
Spindle/Impeller	1000562
Steel Bearing	1000613M
Ceramic Bearing	1000695M
O-Ring(s)	1000921
Spring Washer(s)	1001224
Back Cap	1000441
Cap Tool	1001234



KAVO SMARTorque Mini S605C & S615L

Turbine Steel	1000192
Steel Bearing	1000617M
Ceramic Bearing	1000690M
O-Ring(s)	1000921
Spring Washer(s)	1001223
Cap Tool	1001234



KAVO SMARTorque 609C & S619L

Turbine Steel	1000191
Steel Bearing	1000611M
Ceramic Bearing	1000697M
O-Ring(s)	1000921
Spring Washer	1001223 (Front)
	1001223 (Rear)
Back Cap	1000425
Cap Tool	1001214



KAVO EXPERTorque Mini 675L, 677L

Turbine Ceramic	1000197
Ceramic Bearing	1000695M (Front)
	1000690M (Rear)
O-Ring(s)	1000921
Spring Washer	1001224 (Front)
	1001223 (Rear)
Cap Tool	1001234
Back Cap	1000441



KAVO MASTERorque LUX M8700L Type

Turbine Ceramic	1000198
Ceramic Bearing	1000695M (Front)
	1000697M (Rear)
Spindle/Impeller	1000588
O-Ring (s)	1000921 (Front)
	1000921 (Rear)
Spring Washer (s)	1001224 (Front)
	1001223 (Rear)
Push Button Back Cap	1000485
Push Button Cap Tool	1001234



KAVO MASTERorque LUX M8900L Type

Turbine Ceramic	1000199
Ceramic Bearing	1000695M (Front)
	1000697M (Rear)
Spindle/Impeller	1000587
O-Ring (s)	1000921 (Front)
	1000921 (Rear)
Spring Washer (s)	1001223 (Front)
	1001223 (Rear)
Push Button Back Cap	1000484
Push Button Cap Tool	1001214
Turbine Brake	1001247
Turbine Brake Tool	1001248



KAVO E679L, E680L Turbine

Ceramic Turbine	1000194
Spindle/Impeller	1000586
Ceramic Bearing	1000697M (Front)
Ceramic Bearing	1000695M (Rear)
O-Ring (s)	1000921 (x2)
Spring Washer Front	1001224
Spring Washer Rear	1001223
Push Button Back Cap	1000483
Push Button Cap Tool	1001214



MIDWEST Tradition XGT Type

Turbine Steel	1000110
Conversion Kit	1001110
Rebuild Kit	1000717
Spindle/Impeller	1000510
Spindle	1000210
Steel Bearing	1000604M
Ceramic Bearing	1000694M
O-Ring(s)	1000903
Air Dam	1001220
Back Cap	1000410
Cap Tool	1001243



12 Month warranty on Sable steel & ceramic bearing turbines.

12 Month warranty on Sable steel & ceramic bearing turbines.
*6 Month warranty on Midwest Tradition Screw Type.

REPLACEMENT TURBINES BY BRAND

MIDWEST Quiet Air Type

Turbine Steel	1000112
Conversion Kit	1001111
Rebuild Kit	1000704
Spindle/Impeller	1000515
Spindle	1000216
Steel Bearing	1000604M (Front)
	1000605M (Rear)
Ceramic Bearing	1000694M (Front)
	1000698M (Rear)
O-Ring(s)	1000902 (Front)
	1000903 (Rear)
Back Cap	1000411
Cap Tool	1001243



MIDWEST Stylus, 540S, 541S, 360S, 361S, Type

Turbine Steel	1000153
Rebuild Kit	1000724
Spindle/Impeller	1000567
Steel Bearing	1000614M
Ceramic Bearing	1000689M
O-Ring(s)	1000914
Air Dam	1001218
Back Cap	1000424
Cap Tool	1001253



MIDWEST Stylus ATC 890 Standard Type

Turbine Steel	1000176
Ceramic	1000181
Rebuild Kit Steel	1000737
Ceramic	1000740
Spindle/Impeller	1000565
Spindle	1000237
Steel Bearing	1000611M
Ceramic Bearing	1000697M
O-Ring(s)	1000921
Spring Washer(s)	1001223
Back Cap	1000444
Cap Tool	1001253



MIDWEST Stylus ATC 990 Mini Type

Turbine Steel	1000177
Ceramic	1000182
Rebuild Kit Steel	1000737
Ceramic	1000740
Spindle/Impeller	1000566
Spindle	1000238
Steel Bearing	1000611M
Ceramic Bearing	1000697M
O-Ring(s)	1000921
Spring Washer(s)	1001223
Back Cap	1000444
Cap Tool	1001253



MIDWEST Tradition Lever Type

Turbine Steel	1000183
Rebuild Kit	1000706
Spindle/Impeller	1000583
Steel Bearing	1000604M (Front)
	1000605M (Rear)
O-Ring	1000902 (Front)
	1000903 (Rear)
Spring Washer(s)	1001223
Cap Tool	1001243



MIDWEST Quiet Air Lever Type

Turbine Steel	1000184
Rebuild Kit	1000704
Spindle/Impeller	1000584
Steel Bearing	1000604M (Front)
	1000605M (Rear)
O-Ring(s)	1000902 (Front)
	1000903 (Rear)
Cap Tool	1001243



MIDWEST* Tradition Screw Type

Turbine Steel	1000185
Rebuild Kit	1000704
O-Ring(s)	1000902 (Front)
	1000903 (Rear)
Bur Tool	1001239



MIDWEST* Quiet Air Screw Type

Turbine Steel	1000186
Rebuild Kit	1000706
O-Ring	1000902 (Front)
	1000903 (Rear)
Cap Tool	1001243
Bur Tool	1001241



REPLACEMENT TURBINES BY BRAND

MIDWEST* Tradition Plus Type

Turbine Ceramic	1002102
Spindle/Impeller	1000591
Ceramic Bearing	1000697M
O-Ring(s)	1000921 (Front)
Bur Tool	1001253
Air Dam	1001254
Spring Washer(s)	1000223 (Front)
	1000223 (Rear)
PB Back Cap	1000488
Cap Tool	1001253



MK DENT Large Head Triple Spray Type PB

Turbine Steel	1000128
Rebuild Kit	1000722
Spindle/Impeller	1000528
Spindle	1000228
Steel Bearing	1000601M
Ceramic Bearing	1000699M
O-Ring(s)	1000921
Back Cap	1000428



NSK Ti-Max X500 / NSK NL9000M Type

Turbine Steel	1000167
Rebuild Kit	1000728
Spindle/Impeller	1000558
Steel Bearing	1000608M (Front)
	1000605M (Rear)
Ceramic Bearing	1000693M (Front)
	1000698M (Rear)
O-Ring(s)	1000902 (Front)
	1000912 (Rear)
Air Dam	1001231
Spring Washer(s)	1001223
Cap Tool	1001227



NSK TI-MAX X700 / NSK NL9000T Type

Turbine Steel	1000169
Rebuild Kit	1000729
Spindle/Impeller	1000560
Steel Bearing	1000605M
Ceramic Bearing	1000698M
O-Ring(s)	1000912
Air Dam	1001233
Spring Washer(s)	1001223
Cap Tool	1001229



MK DENT Small Head Type

Turbine Steel	1000127
Rebuild Kit	1000722
Spindle/Impeller	1000527
Spindle	1000227
Steel Bearing	1000601M
Ceramic Bearing	1000699M
O-Ring(s)	1000921
Back Cap	1000427



MK DENT Large Head Single Spray Type

Turbine Steel	1000151
Rebuild Kit	1000722
Spindle/Impeller	1000534
Spindle	1000228
Steel Bearing	1000601M
Ceramic Bearing	1000699M
O-Ring(s)	1000921



NSK Ti-Max X600 / NSK NL9000S, X450, Sabra Power 45S Type

Turbine Steel	1000168
Rebuild Kit	1000729
Spindle/Impeller	1000559
Steel Bearing	1000605M
Ceramic Bearing	1000698M
O-Ring(s)	1000912
Air Dam	1001232
Spring Washer(s)	1001223
Cap Tool	1001228



NSK Ti-Max Z800L Type

Turbine Ceramic	1002101
Spindle/Impeller	1000590
O-Ring(s)	1000912 (Front)
	1000912 (Rear)
Air Dam	1001252
Spring Washer(s)	1001223 (Rear)
Back Cap	1000487
Back Cap Tool	1001251



REPLACEMENT TURBINES BY BRAND

REPLACEMENT TURBINES BY BRAND

NSK Ti-Max Z900L Type



Turbine Ceramic	1002100
Spindle/Impeller	1000589
O-Ring(s)	1000912 (Front)
	1000912 (Rear)
Air Dam	1001250
Spring Washer(s)	1001223 (Rear)
Back Cap	1000486
Back Cap Tool	1001249

PALISADES IMPACT AIR 45

Type (Requires
Sable Back Cap).



Turbine Steel	1000158
Conversion Kit	1001158
Rebuild Kit	1000716
Steel Bearing	1000604M
Ceramic Bearing	1000694M
O-Ring(s)	1000902 (Rear)
	1000906 (Front)
Back Cap	1000458

SABLE S700NL TORQUE Ceramic



Turbine Ceramic	2009911
Rebuild Kit	1000727
Spindle/Impeller	1000557
Steel Bearing	1000605M
Ceramic Bearing	1000698M
O-Ring(s)	1000920
Spring Washer(s)	1001223
Back Cap	2009609
Cap Tool	2001216

SABLE ACCESS™ S4500KL Ceramic



Turbine Ceramic	2009912
Rebuild Kit	1000730
Spindle/Impeller	2009504
Ceramic Bearing	1000697M
O-Ring(s)	1000919
Spring Washer(s)	1001223
Back Cap	2009610
Cap Tool	2001234

SABLE ACCESS™ ACCESS II™



Turbine Steel	2009901
Rebuild Kit	1000719
Spindle/Impeller	2009501
Spindle	2009801
Steel Bearing	1000611M
Ceramic Bearing	1000697M
O-Ring(s)	1000920
Spring Washer(s)	1001223
Back Cap	2009601 (Access)
	2009603 (Access II)
Cap Tool	2001215

SABLE ROTAMAX™



Turbine Steel	2009902
Rebuild Kit	1000720
Spindle/Impeller	2009502
Spindle	2009802
Steel Bearing	1000605M
Ceramic Bearing	1000698M
O-Ring(s)	1000920
Spring Washer(s)	1001223
Back Cap	2009602
Cap Tool	2001216

SABLE ROTAMAX™ S6500KL Ceramic Type



Turbine Ceramic	2009913
Rebuild Kit	1000730
Spindle/Impeller	2009505
Ceramic Bearing	1000697M
O-Ring(s)	1000919
Spring Washer(s)	1001223
Back Cap	2009611
Cap Tool	2001234

SABLE ACCESS™ PRO-NL & KL Mini



Turbine Ceramic	2009914
Back Cap	2009612
Cap Tool	2001253

SABLE ROTAMAX II™



Turbine Steel	2009903
Rebuild Kit	1000719
Spindle/Impeller	2009503
Spindle	2009803
Steel Bearing	1000611M
Ceramic Bearing	1000697M
O-Ring(s)	1000920
Spring Washer(s)	1001223
Back Cap	2009604
Cap Tool	2001216

SABLE ACCESS L™ ACCESS KL™



Turbine Steel	2009907
Rebuild Kit	1000725
Steel Bearing	1000611M
Ceramic Bearing	1000697M
O-Ring(s)	1000916 (x1) (Front)
	1000915 (x2) (Rear)
Spring Washer(s)	1001223
Back Cap	2009605
Cap Tool	2001221

SABLE ROTAMAX™ PRO-NL & KL Torque



Turbine Ceramic	2009915
Back Cap	2009613
Cap Tool	2001253

SIEMENS 4000SL, TS1 Type



Turbine Steel	1000108
Rebuild Kit	1000710
Spindle/Impeller	1000508
Spindle	1000208
Steel Bearing	1000601M
Ceramic Bearing	1000699M
O-Ring(s)	1000921
Back Cap	1000408

SABLE ROTAMAX L™ ROTAMAX KL™



Turbine Steel	2009908
Steel Bearing	1000612M
O-Ring(s)	1000917
Back Cap	2009606
Cap Tool	2001222

SABLE S600NL STANDARD Ceramic



Turbine Ceramic	2009910
Rebuild Kit	1000727
Spindle/Impeller	1000556
Steel Bearing	1000605M
Ceramic Bearing	1000698M
O-Ring(s)	1000920
Spring Washer(s)	1001223
Back Cap	2009608
Cap Tool	2001214

SIEMENS 4000ML, TM1 Type



Turbine Steel	1000123
Rebuild Kit	1000710
Spindle/Impeller	1000523
Spindle	1000223
Steel Bearing	1000601M
Ceramic Bearing	1000699M
O-Ring(s)	1000921

SIRONA T1 Control Highspeed Type



Turbine Steel	1000154
Spindle/Impeller	1000554
Spindle	1000254
O-Ring(s)	1000921

12 Month warranty on Sable steel & ceramic bearing turbines.

12 Month warranty on Sable steel & ceramic bearing turbines.

REPLACEMENT TURBINES BY BRAND

SIRONA T2 CONTROL Highspeed Type



Turbine Steel	1000155
Spindle/Impeller	1000555
Spindle	1000255
O-Ring(s)	1000902
Steel Bearing	1000611M (x2)

SIRONA T2 & T3 RACER Type



Turbine Steel	1000163
O-Ring(s)	1000907
Steel Bearing	1000611M
Ceramic Bearing	1000697M

SIRONA T2 Mini / ProDrive PD-LMS / Patterson Mini Head Type



Turbine Steel	1000190
O-Ring(s)	1000907
Ceramic Bearing	1000697M

STAR 430/431 Type



Turbine Steel	1000106
Conversion Kit	1001106
Rebuild Kit	1000711 (w clips)
	1000712 (w/o clips)
Spindle/Impeller	1000506
Spindle	1000206
Steel Bearing	1000609M
O-Ring(s)	1000906
Back Cap	1000406
Cap Tool	1001243

STAR *LUBE FREE* Ceramic Type



Turbine Ceramic	1000162
Spindle/Impeller	1000506
Spindle	1000206
Ceramic Bearing	1000692M (x2)
O-Ring(s)	1000906
Back Cap	1000406
Cap Tool	1001243

VECTOR Small Head Type



Turbine Steel	1000129
Rebuild Kit	1000723
Spindle/Impeller	1000529
Spindle	1000229
Steel Bearing	1000601M
Ceramic Bearing	1000699M
O-Ring(s)	1000921
Back Cap	1000429

VECTOR Large Head Triple Spray Type



Turbine Steel	1000130
Rebuild Kit	1000723
Spindle/Impeller	1000530
Spindle	1000230
Steel Bearing	1000601M
Ceramic Bearing	1000699M
O-Ring(s)	1000921
Back Cap	1000430

VECTOR Large Head Single Spray Type



Turbine Steel	1000152
Rebuild Kit	1000723
Spindle/Impeller	1000530
Spindle	1000230
Steel Bearing	1000601M (x2)
Ceramic Bearing	1000699M (x2)
O-Ring(s)	1000921
Back Cap	1000430

REPLACEMENT TURBINES BY BRAND

W&H TOPAIR 795, 798, 895, 898 Type



Turbine Steel	1000104
Rebuild Kit	1000713
Spindle/Impeller	1000504
Spindle	1000204
Steel Bearing	1000611M (x2)
O-Ring(s)	1000907
Spring Washer(s)	1001223
Back Cap	1000404
Cap Tool	1001216

W&H TOPLIGHT 796, 896 Type



Turbine Steel	1000105
Rebuild Kit	1000713
Spindle/Impeller	1000505
Spindle	1000205
Steel Bearing	1000611M
O-Ring(s)	1000907
Spring Washer(s)	1001223
Back Cap	1000405
Cap Tool	1001215

W&H 300 SERIES, SABRA Type



Turbine Steel	1000113
Rebuild Kit	1000714
Spindle/Impeller	1000513
Spindle	1000204
Steel Bearing	1000605M
O-Ring(s)	1000921
Spring Washer(s)	1001223
Back Cap	1000404

W&H SYNEA TA-96 Type



Turbine Steel	1000118
Rebuild Kit	1000713
Spindle/Impeller	1000518
Spindle	1000220
Steel Bearing	1000611M
O-Ring(s)	1000907
Spring Washer(s)	1001223
Cap Tool	1001215
Back Cap	1000482

W&H TA-98L Type



Turbine Steel	1000119
Rebuild Kit	1000713
Spindle/Impeller	1000519
Spindle	1000221
Steel Bearing	1000611M
O-Ring(s)	1000907
Spring Washer(s)	1001223
Back Cap	1000471
Cap Tool	1001225

W&H TREND TC-95RM Type



Turbine Steel	1000124
Rebuild Kit	1000713
Spindle/Impeller	1000524
Spindle	1000225
Ceramic Bearing	1000697M
Steel Bearing	1000611M (x2)
O-Ring(s)	1000907

W&H Adec Synea TA-97 LW, TA-97 LED, TK-97L, TG-97 (L, LW, LM, LN) 400 Series Type



Turbine Steel	1000164
Rebuild Kit	1000713
Spindle/Impeller	1000535
Spindle	1000241
Steel Bearing	1000611M
O-Ring(s)	1000907
Spring Washer(s)	1001223
Back Cap	1000473
Cap Tool	1001226

W&H Adec Synea TA-98 LW, TG98 TA-98 LED, TK-98L, TK98 (L, LW, LM, LN), 400 Series Type



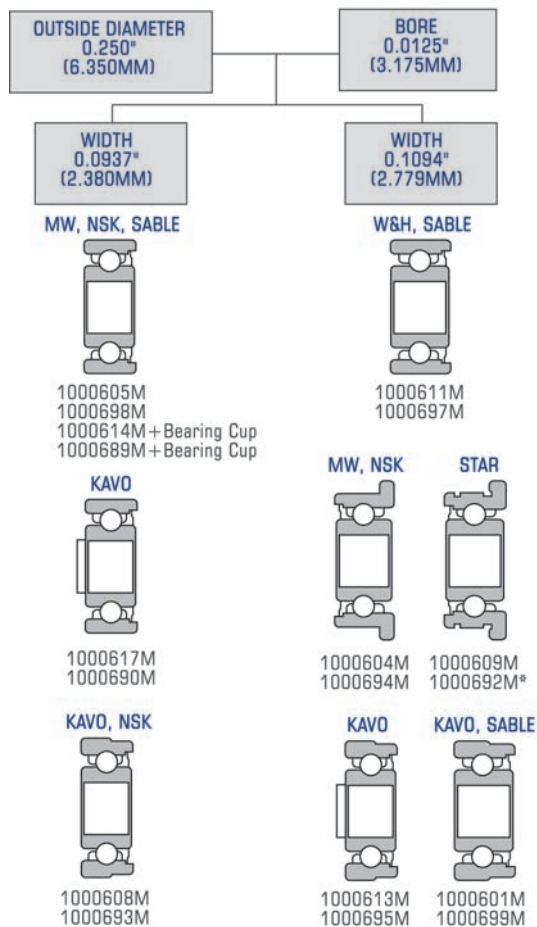
Turbine Steel	1000172
Rebuild Kit	1000713
Spindle/Impeller	1000536
Spindle	1000240
Steel Bearing	1000611M
Ceramic Bearing	1000697M
O-Ring(s)	1000907
Spring Washer(s)	1001223
Back Cap	1000472
Cap Tool	1001235

The flow table shows bearing variants available. By matching the bearing removed from the handpiece with the illustrations shown, it is possible to select the bearing type. Special note should be taken of number of shields and shield location, flanged or non flanged, special OD grooving and any other unusual features.

“S” Steel Ball Bearing

“C” Ceramic Ball Bearing

* Angular Contact



NSK Pana-Air Mini Canister

1001301

NSK MODEL# NPA-M03



NSK Pana-Air Standard Canister*

1001302

NSK MODEL# NPA-S03



NSK Pana-Air Torque Canister

1001303

NSK MODEL# NPA-T03



Safco Super Grade Canister

1001304

SABLE NSK CANISTERS - USA grade
ABEC 7 Angular Contact Bearings.
4 Month Manufacturers Warranty.



**NSK & OEM CANISTER PB TYPE
TURBINES**

NSK PANA-AIR Mini Canister

1001401

NSK MODEL# NPA-MU03



NSK PANA-AIR Standard Canister*

1001402

NSK MODEL# NPA-SU03



NSK PANA-AIR Torque Canister

1001403

NSK MODEL# NPA-TU03



NSK PANA 2000 Mini Canister

1001409

NSK MODEL# PANA 2000-NUO3



NSK PANA 2000 Torque Canister

1001410

NSK MODEL# PANA 2000-SUO3



* Also fits Champion, Healthco, Henry Schein, Darby, Naminex, Medidenta, Dental Aire.

PUSH BUTTON TYPE

NSK PANA MAX Standard
1001496
NSK MODEL# PAX-SU03



NSK PHATELUS I Mini Twist-Free Mini
ALPHALITE Mini KINETIC VIPER, Mini
1001497
NSK MODEL# NTF-MU03



NSK PHATELUS I STANDARD TWIST-FREE
Standard ALPHALITE Standard
KINETIC VIPER, Standard
1001498
NSK MODEL# NTF-SU03



NSK PHATELUS I Torque Twist-Free
Torque ALPHALITE Torque
KINETIC VIPER, Torque
1001499
NSK MODEL# NTF-TU03



NSK PHATELUS II Mini Canister
NL-65 / CH-QD
1001404
NSK MODEL# NCH-MU03



NSK Phatelus II NL-75
45 Degree Standard & 45-S Surgical hpc
1001405
NSK MODEL# NCH-SU03



NSK PHATELUS II Torque Canister
NL-65 / CH-QD
1001406
NSK MODEL# NCH-TU03



HEALTHCO Push And Swivel
HEALTHCO PUSH, Swivel And Light
NSK VIP-AIR / VIP II
1001407
NSK MODEL# NVA-SU03



SAFCO Super Grade Canister
1001408



NSK MACH-LITE XT Mini Canister
MACH-LITE / MACH / MACH-QD
NL-75 / NL-85 AK200L
1001501 NSK MODEL# NMC-MU03



NSK MACH-LITE XT Standard Canister
MACH-LITE / MACH / MACH-QD
AK300L, NL-75 / NL-85
1001502 NSK MODEL# NMC-SU03



NSK MACH-LITE XT Torque Canister
MACH-LITE / MACH / MACH-QD
NL-75 / NL-85
1001503 NSK MODEL# NMC-TU03



MICRO MOTORS Ih730
MINI CANISTER LHS-720
1001504



MICRO MOTORS LHS700, 715
Standard Canister LHS-715 LHS-700
1001505



SABLE NSK CANISTERS - USA grade ABEC 7 Angular
Contact Bearings 6 Month Manufacturers Warranty.

NSK TI-MAX A500L,
AK500L, NL-95M
1001506
NSK MODEL# TI-MU03



NSK TI-MAX A600L,
AK600L, NL-95S
1001507
NSK MODEL# TI-SU03



NSK TI-MAX A700L, AK700L, NL-95T
1001508
NSK MODEL# TI-TU03



NSK S-MAX M500 TYPE
PB Mini Canister
1001509
NSK MODEL# SMAX MU03



NSK S-MAX M600 TYPE
PB Standard Canister
1001510
NSK MODEL# SMAX-SU03



CHUCK TYPE

NSK PANA-AIR Mini Canister
1001601
NSK MODEL# NPA-M03



NSK PANA-AIR Standard Canister+
1001602
NSK MODEL# NPA-S03



NSK PANA-AIR Torque Canister
1001603
NSK MODEL# NPA-T03



SAFCO Super Grade Canister
1001604



+Also fits Champion, Healthco, Henry Schein, Darby, Naminex, Medidenta, Dental Aire. USA grade ABEC 7 Radial Bearings. * No Manufacturers Warranty offered.

PUSH BUTTON TYPE

NSK PANA-AIR Mini Canister
1001701
NSK MODEL# NPA-MU03



NSK PANA-AIR Standard Canister
1001702
NSK MODEL# NPA-SU03



NSK PANA-AIR Torque Canister
1001703
NSK MODEL# NPA-TU03



SAFCO Super Grade Canister
1001704



NSK & OEM BACK CAPS

NSK Chuck Type PANA-Air Mini & Standard*
Fits w/ Sable Part #'s 1001301, 1001302, 1001601, 1001602
1000431

NSK PB Type PANA-Air Mini & Standard*
Fits w/ Sable Part #'s 1001401, 1001402, 1001701, 1001702
1000432

NSK PB Type PHATELUS II Mini & Standard
NSK PB Type MACH-LITE Mini & Standard
Fits w/ Sable Part #'s 1001404, 1001405, 1001501, 1001502
1000433

+Also fits Champion, Healthco, Henry Schein, Darby, Naminex, Medidenta, Dental Aire.

HANDPIECE REPLACEMENT BULBS

SABLE ACCESS L & ROTAMAX L
SINGLE 1000816
5 PACK 1000817



KAVO LUX Coupler
OEM code 553 3881
SINGLE 1000801
3 PACK 1000802



NSK OEM code Y900 529
SINGLE 1000803
3 PACK 1000804



MIDWEST MW Power Optic
In-Hose Swivel OEM code 650064
SINGLE 1000810
2 PACK 1000809



MIDWEST XGT/Stylus/Stylus ATC
OEM code 790257
SINGLE 1000818



MK-DENT MK Dent QC 5016
Coupler OEM code BU7012
SINGLE 1000812
3 PACK 1000811



W&H Type Single
1000821



DABI ATLANTE MSL
OEM code 42001-021/2
SINGLE 1000807
3 PACK 1000808



5 Hole Tubing Bulb
Fits Sable Part #2100201 / 2100202
1000815



NLC 400 (Sable NSK Type Coupler)
1000819



VECTOR
Type Single 1000814
Type (3 Pack) 1000813

LED FIBER OPTIC HANDPIECE REPLACEMENT BULBS

KAVO Type	Single LED		1000850
	3 Pack LED		1000851

KAVO Motor Type	Single LED		1000852
	3 Pack LED		1000853

NSK Type	Single LED		1000864
	3 Pack LED		1000865

MIDWEST Type XGT/Stylus/Stylus ATC	Single LED		1000866
	3 Pack LED		1000867

W&H Type	Single LED		1000854
	3 Pack LED		1000855

BIEN AIR Motor Type	Single LED		1000858
	3 Pack LED		1000859

BIEN AIR Type	Single LED		1000860
	3 Pack LED		1000861

SIRONA Type	Single LED		1000856
	3 Pack LED		1000857

SIRONA Motor Type	Single LED		1000862
	3 Pack LED		1000863

LIGHT CONTROL

Sable Light Control Features:

- Power Source: 100-240V, 9VDC; 2.2 Amp
- Adjustable Output: DC 2V-3.5V
- Adjustable Illumination time delay: 0 - 20 seconds for each handpiece
- 1 or 2 Optic Handpieces
- Operates All Brands Of Handpieces
- Weight: 4 oz.
- W 2.25" x L 3.5" x H 1"

SABLE Light Control 7FT Tubing Kit Includes:

- 2300101: Sable Light Control Board, 1-2 Handpieces
- 2300203 SABLE Power Transformer 100-240V; 9VDC; 2.2 Amp
- 2100103 6 Hole, 7 Foot, Straight GRAY Tubing

2300001

SABLE Light Control 10FT Tubing Kit Includes:

- 2300101: Sable Light Control Board, 1-2 Handpieces
- 2300203 SABLE Power Transformer 100-240V; 9VDC; 2.2 Amp
- 2100105 6 Hole, 10 Foot, Straight GRAY Tubing

2300002

SABLE Light Control 5-Hole Tubing Kit Includes:

- 2300101: Sable Light Control Board, 1-2 Handpieces
- 2300203 SABLE Power Transformer 100-240V; 9VDC; 2.2 Amp
- 2100202 5 Hole, 7 Foot Straight GRAY Tubing with Bulb (1000815)

2300003

Sable Light Control Board

- 1 or 2 Optic Handpieces
- Adjustable Output: DC 2V-3.5V
- Adjustable Illumination
- Time Delay: 0 - 20 seconds for each handpiece

2300101



Sable Power Transformer

- 9VDC, 100-240V, 2.2 Amp

2300203

NEW

As of January 1st 2018 Sable has replaced our current transformer from 12VDC 1 Amp to 9VDC 2.2 Amp wall type military spec. power transformer.

This change will now allow Any STAR Dental Halogen Bulb to be used with our light control board.



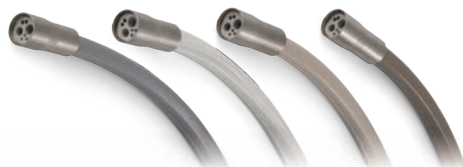
Sable Tubing Hook-Up Kit

2300202



* Please see page 37 for our complete listing of Sable Handpiece Tubing. Tubing can be substituted for different colours of equal value at no charge.

ISO FIBER OPTIC HANDPIECE TUBING



GRAY STERLING (WHITE) SURF DARK SURF

ISO FIBER OPTIC HANDPIECE TUBING

6 Hole, 7 Foot, Straight;

Gray	2100103
Sterling (White)	2100108
Surf (Light Brown Or Sand)	2100104
Dark Surf (A-dec Type)	2100110

6 Hole, 10 Foot, Straight;

Gray	2100105
Sterling (White)	2100109
Surf (Light Brown Or Sand)	2100106
Dark Surf (A-dec Type)	2100111

5 Hole, 7 Foot, Straight;

Gray W/ Bulb	2100202
Sterling (White) W/ Bulb	2100201

Replacement Bulb;

Bulb	1000815
------	---------

SABLE BRAND EURO TYPE TUBING

Silicone GRAY Tubing with 10-32 to Metric Barb

5-Foot, 4-Hole	2100301
5-Foot, 6-Hole	2100302
7-Foot, 4-Hole	2100304
7-Foot, 6-Hole	2100305



SABLE BRAND ADEC TYPE TUBING

52 1/4", ADEC type Silicone GRAY Tubing with Quick Disconnect Fittings

4-Hole	2100401
6-Hole	2100402



Sable Buck & Boost Transformers represent an economical way to both raise supply voltage caused by line drop and equipment demands or lower voltage caused by increased system voltages.

Critical Dental Equipment like Compressors, Vacuums, Sterilizers, Pan-Ceph's, and Interoral X-Rays, require a stable supply voltage to maintain optimum performance and prevent premature failure.



Sable Buck-Boost Transformers are:

- ✓ Steps up or steps down incoming Voltage.
- ✓ Made in Canada.
- ✓ CSA & UL approved.
- ✓ Variety of applications such as compressors, vacuums, sterilizers x-rays and more.
- ✓ Include Simple step by step bilingual install directions and drawing.
- ✓ Smaller and lighter than competitors.
- ✓ More efficient.
- ✓ Encapsulated with electrical grade silica sand and resin compounds.
- ✓ Front accessible separate high and low voltage lead wires.
- ✓ Conduit knock-outs located on the side and rear of every unit.
- ✓ Standard wall mounting with template.
- ✓ Valid for single and three phase.
- ✓ 10 Year Warranty.

Three steps to select the correct buck-boost transformer.

1. Line Voltage – The voltage that you want to buck (decrease) or boost (increase). This can be done by measuring the supply line voltage with a voltmeter.
2. Load Voltage – The voltage at which your equipment is designed to operate. This information can be found on the nameplate of the equipment that you want to operate.
3. Load kVA or Load Amps – You do not need to know both – one or the other is sufficient. This information can be found on the nameplate of the equipment.

350 VA, (0.35 KVA), 120/240V-12/24,
50/60Hz, CU NEMA-3R, 80 C, 4.5"W x 5.75"D x 7.25"H
Wall mount 14 LBS, 3500 Type 3001000

500 VA, (0.50 KVA), 120/240V-12/24,
50/60 Hz, CU NEMA-3R, 80 C, 5.00"W x 4.75"D x 9.25"H
Wall Mount 15 LBS, 5000 Type 3001010

750 VA, (0.75 KVA), 120/240V-12/24,
50/60Hz, CU NEMA-3R, 80 C, 5.00"W x 4.75"D x 9.25"H
Wall Mount 18 LBS, 7500 Type 3001020

NEW 3 WIRE BUCK BOOSTS

Three Wire, 3500KVA
Ideal for small applications such as sterilizers and other assorted table top items 3001005

Three Wire, 5000KVA
Ideal for single head compressors or suction units 3001015

Three Wire, 7500KVA
Ideal for dual head compressors or dual head suction units 3001025

Please refer to Diagram under downloads on Sable Website.



TURBINES

Sable Replacement Steel or Ceramic Bearing Turbines Includes, Spindle, Chuck, Impeller, or Bearings: 12 Months

Sable Conversion Turbines Steel or Ceramic Includes Spindle, Chuck, Impeller, Back Cap or Bearings: 12 Months

Manual Chuck Type Canister Turbines: 4 Months

NSK Type PB Type Canister Turbines: 6 Months

NSK Type Economy Canister Turbines: No Warranty

Midwest Screw Type Turbines 6 Months

1:5 ELECTRIC PARTS 12 Months

TURBINE SERVICE ITEMS

Caps ,Spindles, and Spindle/Impeller Combos: 12 Months

BEARINGS

(Loose Bearings) All High-speed Steel, Ceramic, Standard Slow Speed Bearings No Warranty

REBUILD KITS

All rebuild kits No Warranty

O-RINGS

All O-rings Manufacturer Defect Only

BULBS

Handpiece Replacement Bulbs: Manufacturer Defect Only

TUBINGS

Handpiece Tubing: Manufacturer Defect Only

SLOW SPEED

KaVo Type Premium Slow Speed products (ALL): 12 Months

Slow Speed Air Motors: 12 Months

Slow Speed Contra Angles and Nosecones: 6 Months

Slow Speed Packages (NSK or KaVo Type): 12 Months

Slow Speed Heads: 3 Months

U Type Contra Angles: 3 Months

HIGH SPEED

High Speed Handpiece: 12 Months

High Speed Non-Optic Handpiece Couplers: 12 Months

New PRO Series High Speed Handpieces 24 Months

Light Control Set: 12 months (on the Light Box and Transformer)

AUTOSCALER

South East Instruments Autoscaler: 1 Year Parts & Labour

Circuitry: 6 Year Extended Warranty

Handpiece Tips: Manufacturer Defect Only

HP Tubing Assembly: Manufacturer Defect Only

Buck & Boost Transformers 10 Year Warranty

PRODUCT RETURN PROCEDURE

A Return Authorization is required for all returns. Please contact Sable Industries Inc. to obtain an authorization number at 1-800-368-8106.

Customers are responsible for Return Shipping Costs. No Returns on Special Orders!

Please indicate RA# on the outside of the carton. Please accompany returns with pertinent invoices and paperwork. Refunds will be credited to the account minus shipping costs. Products not required or ordered in error could be subject to a 25% restocking fee, all merchandise must be in new, unused condition to receive credit.

All USA Repairs and Returns are through our USA Repair Centre; Sable USA

**31575 Glendale Street
Livonia, MI
48150**

CONDITIONS

Sable Industries Inc. reserves the right to review warranty claims, request supporting documentation, and/or substitute product or remaining portion of original cost.

Return Address; Sable Industries Inc.
100 Campbell Avenue Suite 5
Kitchener, On N2H 4X8 Canada
P: 1-800-368-8106 F: 1-519-579-9324

PRICING

A minimum order of \$250.00 is required, if minimum is not met, a \$30.00 processing fee will apply. We make every effort to maintain prices for the duration of the catalogue, but we reserve the right to make price adjustments to any increase in transportation, labour, material, or other cost. We reserve the right to correct obvious errors in specifications or prices.

EXPORT COMPLIANCE

Any subsequent export, transfer, resale or other disposition of the products from the United States /Canada must be made in accordance with applicable law. Purchaser shall not export or re-export the products in violation of any export control laws, or without all necessary authorizations and/or licenses. Purchaser shall be solely responsible for obtaining and paying for such required licenses or approvals from the appropriate governmental agencies or authorities. Purchaser shall indemnify, defend and hold seller harmless from and against any and all losses, damages, costs and expenses (including attorneys' fees) incurred by seller by reason of any failure of purchaser to comply with such export control laws. Seller shall be relieved of all obligations to provide products to purchaser if purchaser violates any export control laws, or if any related approvals/license are suspended or revoked.