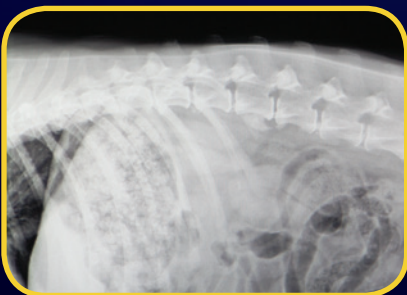


# SA100+HF



Designed for the companion or mixed animal practitioner, the **SA100+HF Radiography System** is easy to use, compact and requires just 10 square feet of floor space. This system combines our most powerful **HF100+ Ultra Light** veterinary x-ray unit with the **XRT100+** table. Features of the **SA100+HF** include:

- Operation on incoming voltage of 110-240 VAC 50/60 Hz
- **XRT100+** table with cassette tray and 6:1 ratio, 103 lpi stationary grid
- Integrated tube stand and cassette tray with longitudinal travel, for easy patient positioning
- Simple mounting and removal of portable x-ray device for use on ambulatory calls
- Backed by a 5-year limited warranty

**MINXRAY<sup>®</sup>**  
**INC.**

Where you care, we're there.

# SA100+HF

## HF100+ ULTRA LIGHT X-RAY UNIT

<b>ELECTRONIC DESIGN</b>	Computer-controlled, high frequency, full-wave rectified
<b>X-RAY OUTPUT</b>	40mA@40-50 kVDC, 35mA@52-60 kVDC, 30mA@62-70 kVDC, 25mA@72-80 kVDC, 20mA@82-100 kVDC
<b>AC INPUT</b>	110 or 240 V; 50/60 Hz, 20 amps
<b>LINE VOLTAGE ADJUSTMENT</b>	Automatic, dynamic
<b>TIMER</b>	Ultra high resolution, 0.1-2.0 sec (61 total steps)
<b>INTERNAL POWER SUPPLY</b>	60 kHz Resonating High Frequency Inverter System
<b>X-RAY TUBE</b>	Toshiba D-124K
<b>FOCAL SPOT SIZE</b>	1.2 mm
<b>ANODE HEAT STORAGE</b>	20 kHU
<b>TOTAL FILTRATION</b>	2.7 mm Al equivalent
<b>COLLIMATOR</b>	Continuously adjustable light beam type with adjustable dual integrated laser pointers to indicate central ray and distance in bright ambient light conditions
<b>LP4 LASER POINTERS</b>	Class IIIa; max. output less than 5.0 mW, wavelength 600-680 nm
<b>EXPOSURE SWITCH</b>	FS-HF footswitch
<b>EXPOSURE CORD</b>	8 ft (2.4 meters)
<b>POWER CORD</b>	20 ft (6.1 meters)
<b>SIZE</b>	9.45 x 7.72 x 14.37 in (24 x 19.6 x 36.5 cm)
<b>WEIGHT</b>	24.2 lb (11 kg)

## XRT100+ COMPACT X-RAY TABLE

<b>SIZE</b>	23 x 54 in (58.4 x 137.2 cm)
<b>TABLE HEIGHT</b>	31.5 in (80.01 cm)
<b>FOCAL FILM DISTANCE</b>	34 in (86 cm)
<b>WEIGHT</b>	140 lb (64 kg)



## Ordering Information

### The SA100+HF Radiography System includes:

- 1 ea. **HF100+** x-ray unit with FS-HF footswitch
- 1 ea. **XRT100+** table with integrated tubestand and cassette tray

Optional 12 in side extensions available and Carrying case for the **HF100+** (Recommended for use on ambulatory calls)

Shipping Weight of 215 lb (97 kg)

For more information about MinXray products, contact your local dealer or MinXray at:

**MinXray, Inc.**  
3611 Commercial Avenue  
Northbrook, Illinois 60062 USA  
1-847-564-0323

**Toll Free:** 1-800-221-2245 (U.S. & CA.)  
**E-mail:** info@minxray.com  
**Web:** www.minxray.com

# MINXRAY<sup>®</sup> INC.

Where you care, we're there.

