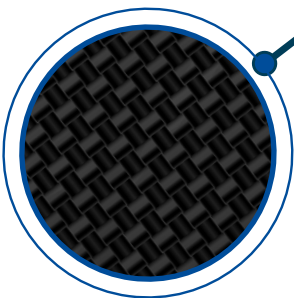


CarbonTech *V2* / by Mano Médical

Heating Mat

Top-grade comfort and safety for the patient

EFFICIENT
RELIABLE
SAFE



Why use the CarbonTech V2 heating mat ?



• Prevention

Maintaining the body temperature is very important in the peri and post surgery period. The inability of an anaesthetised patient to maintain its body temperature will lead to hypothermia.

Consequences of hypothermia can include:

- ▶ Slower recovery from anaesthesia
- ▶ Delayed wound healing
- ▶ Risk of shock, poor blood circulation
- ▶ Increased risk of lethal outcome

Maintaining a patient's body temperature is also important during simple procedures such as dental scaling.

The smaller the animal, the greater the risk of hypothermia. Thus, monitoring temperature is very important for rodents and birds.



Curative

Hypothermia associated with shock must be treated slowly and systematically. It is important to maintain the body temperature as closest as possible to 38°C (100°F). The heating mat enables gentle warming of the patient while bringing to the minimum the risk of burns.

The use of Carbon Tech V2 during anaesthesia or recovery to maintain patient temperature is simple and safe.



Two sizes available:

Surgical table model: 52 x 112 cm (+/- 1 cm) - Operation : 50W - 24V
Cage model: 52 x 62 cm (+/- 1 cm) - Operation: 25W - 24V



Optimal patient care



Increased safety with integrated regulation device

New!

CarbonTech V2 is equipped with a **temperature probe** and a **high accuracy limiter**, to ensure that the contact temperature does not exceed the safety limits (42 °C - 107.6 °F)

Extra flat, Carbon Tech V2 carbon fabric does not store heat, **bringing to the minimum the risk of burns.**



REGULATION
TEMPERATURE
WITHIN
3 MINUTES



Efficient

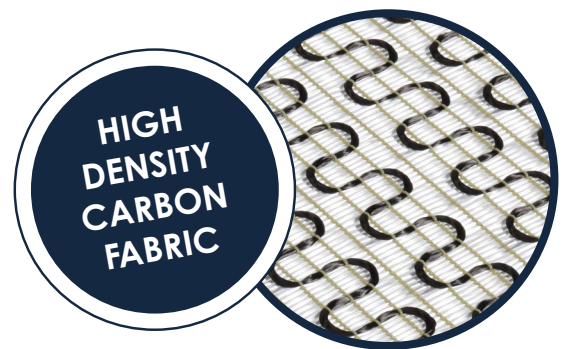
Thanks to the **integrated regulation device**, CarbonTech V2 reaches its regulation temperature **within 3 minutes.**

CarbonTech V2 is designed to maintain the temperature necessary for warming the animal during long periods.

Carbon Tech technology

Carbon Tech V2 incorporates a high density carbon fabric, specially designed for even heat distribution.

The soft yet resistant texture of the mat provides the patient with **maximum comfort.**



HIGH
DENSITY
CARBON
FABRIC

Practical, robust and hygienic

A fastening system allows to attach the power block of the mat under the surgery table **to secure the work environment.**

The protective coating of Carbon Tech V2 is designed for maximum resistance to animal scratching and biting and is totally waterproof.

CarbonTech V2 can be cleaned easily with water and soap. Cleaning is facilitated by its disconnectable power cable.



New!

EASY
CLEANING
WITH
DISCONNECTABLE
POWER BLOCK



Carbon Tech V2 new advantages

- ▶ Power increased to reach faster the heating temperature
- ▶ Safe temperature regulation (integrated sensor)
- ▶ Safety shutdown after 12 hours of heating



Mano
Médical

Medical equipment for veterinarians

15, rue du Noroît
22100 Taden - France
Tel. +33 (0)2 96 85 86 76

welcome@manomedical.com

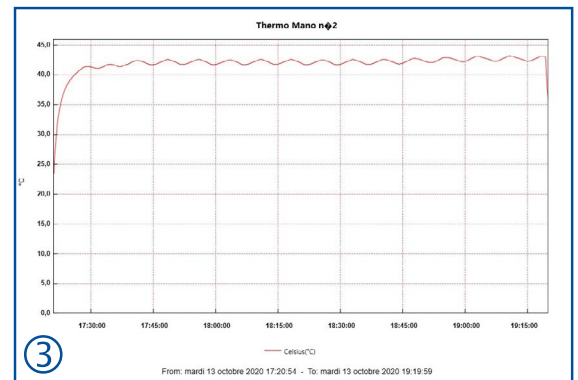
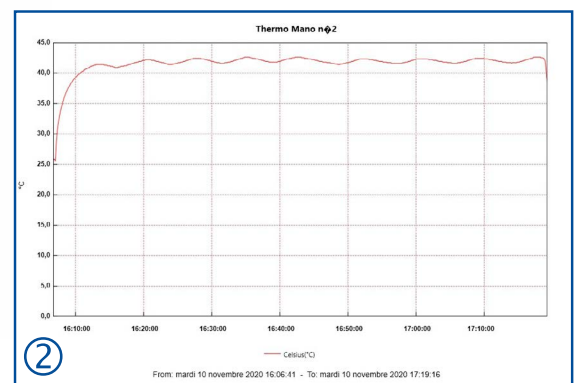
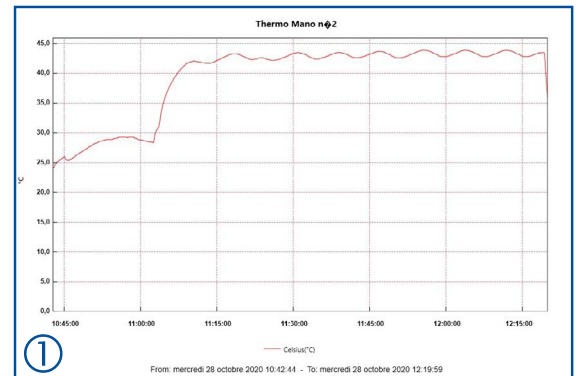
www.manomedical.com

Technical specifications



New!

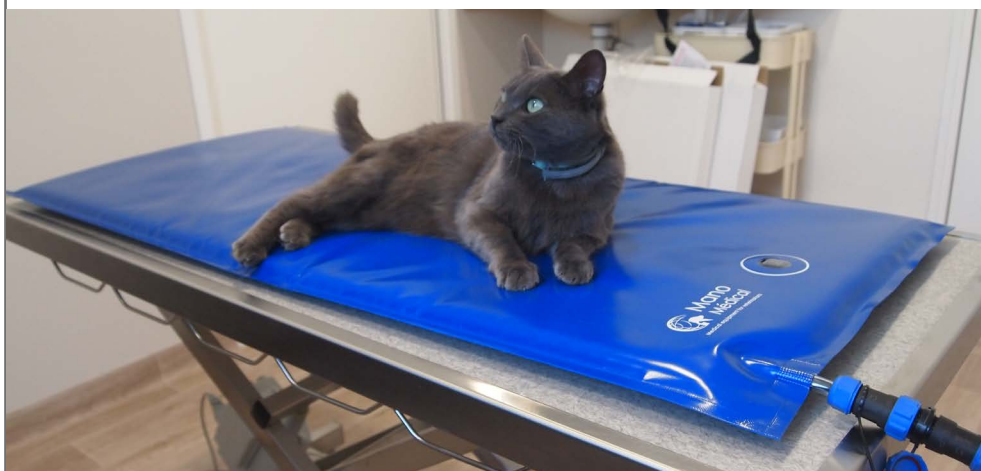
- ▶ Integrated probe with temperature sensor
- ▶ Integrated temperature limiter (107.6°F - 42°C)
- ▶ 3 power levels (50%, 80% and 100%)
- ▶ Automatic shut-down after 12 hours of heating
- ▶ Disconnectable power block
- ▶ Universal power supply from 100 to 240V
- ▶ 24V DC operation
- ▶ High density carbon fabric
- ▶ Soft, resistant, easy-to-maintain coating



Clinical results

Clinical tests have shown that the use of temperature limiter makes it possible to optimize heating to better fight against hypothermia.

- ① 4 kg Cat - intervention time: 1h40
Temperature before surgery: 38.4°C
Temperature at the end of the surgery: 38.1°C
- ② 9 kg Poodle - intervention time: 1h10
Temperature before surgery: 37.8°C
Temperature at the end of the surgery: 37.7°C
- ③ 40 kg Labrador - intervention time: 2h00
Temperature before surgery: 38.7°C
Temperature at the end of the surgery: 38.2°C



15, rue du Noroît
22100 Taden - France
Tel. +33 (0)2 96 85 86 76

welcome@manomedical.com

www.manomedical.com